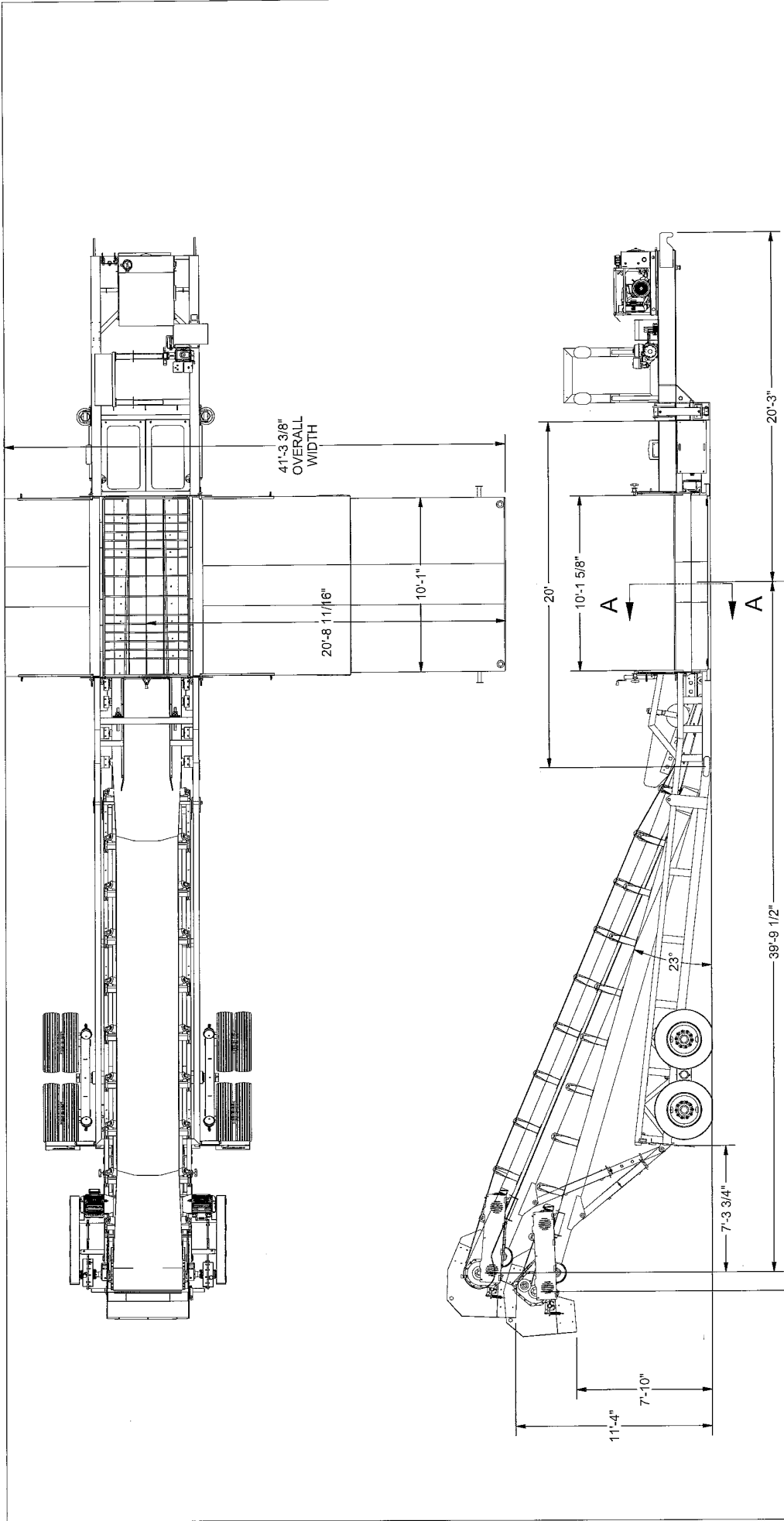


MASABA
MINING EQUIPMENT
VERMILLION, SD USA 605-624-9555

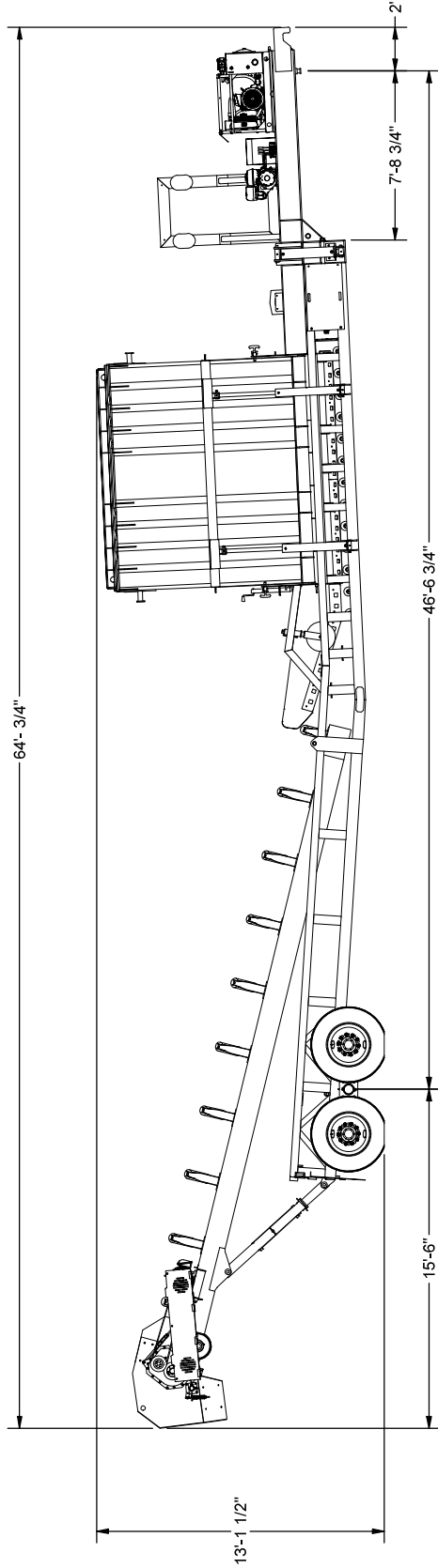
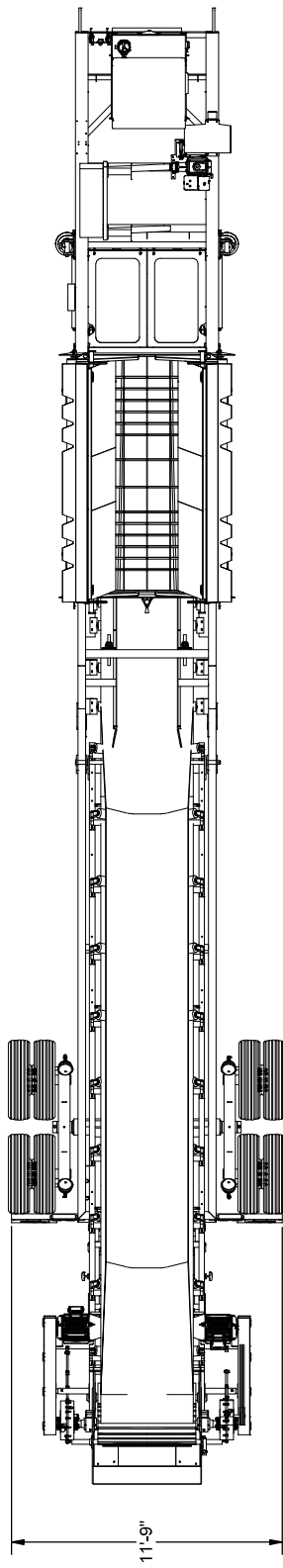
DESCRIPTION	48 IN TRUCK UNLOADER		
DESIGNED BY	ESG	WEIGHT	N/A
DRAWN BY	ADS	DATE	2/24/2012
SCALE	3/16" = 1'	PART NUMBER	19279000
		SIZE	B
		SHEET	2 / 4
		REV	000

THIS DRAWING IS THE PROPERTY OF MASABA MINING EQUIPMENT AND SHALL NOT BE DUPLICATED, COPIED, REPRODUCED OR TRANSMITTED IN ANY FORM OR BY ANY MEANS WITHOUT THE AUTHORIZED PERMISSION FROM MASABA MINING EQUIPMENT. THIS DOCUMENT IS TO BE USED ONLY FOR THE PROJECT AND DIMENSIONAL TOLERANCES: .1/16"



VERMILLION, SD USA 605-624-9555		
DESCRIPTION 48 IN TRUCK UNLOADER		
DESIGNED BY ESG	WEIGHT N/A	SIZE B
DRAWN BY ADS	DATE 2/24/2012	SHEET 3 / 4
SCALE 3/16" = 1'	PART NUMBER 19279000	REV 000

THIS DRAWING IS THE PROPERTY OF MASABA MINING EQUIPMENT AND SHALL NOT BE DUPLICATED, COPIED, REPRODUCED, OR DISCLOSED WITHOUT THE AUTHORIZED PERMISSION FROM MASABA MINING EQUIPMENT. THIS DRAWING IS TO BE RETURNED UPON REQUEST. DIMENSIONAL TOLERANCES: .010"



MASABA MINING EQUIPMENT		VERMILLION, SD USA 605-624-9555	
48 IN TRUCK UNLOADER			
DESIGNED BY	ESG	WEIGHT	N/A
DRAWN BY	ADS	DATE	2/24/2012
SCALE	3/16" = 1'	PART NUMBER	19279000
		SIZE	B
		SHEET	4 / 4
		REV	000

THIS DRAWING IS THE PROPERTY OF MASABA MINING EQUIPMENT AND SHALL NOT BE DUPLICATED, COPIED, REPRODUCED OR USED WITHOUT THE AUTHORIZED PERMISSION FROM MASABA MINING EQUIPMENT. IF THIS DRAWING IS NOT RETURNED UPON REQUEST, DIMENSIONAL TOLERANCES: 1/16"