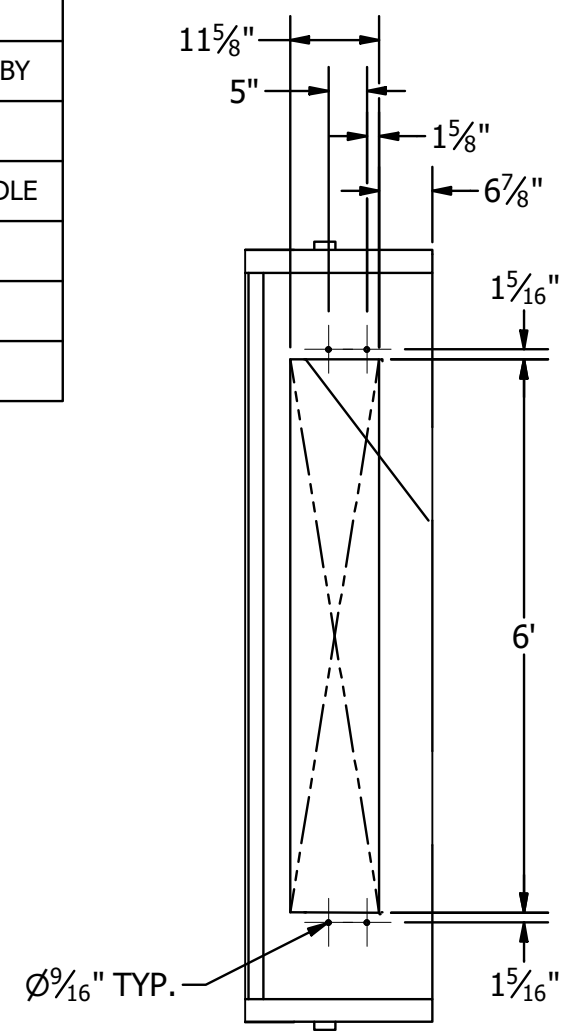
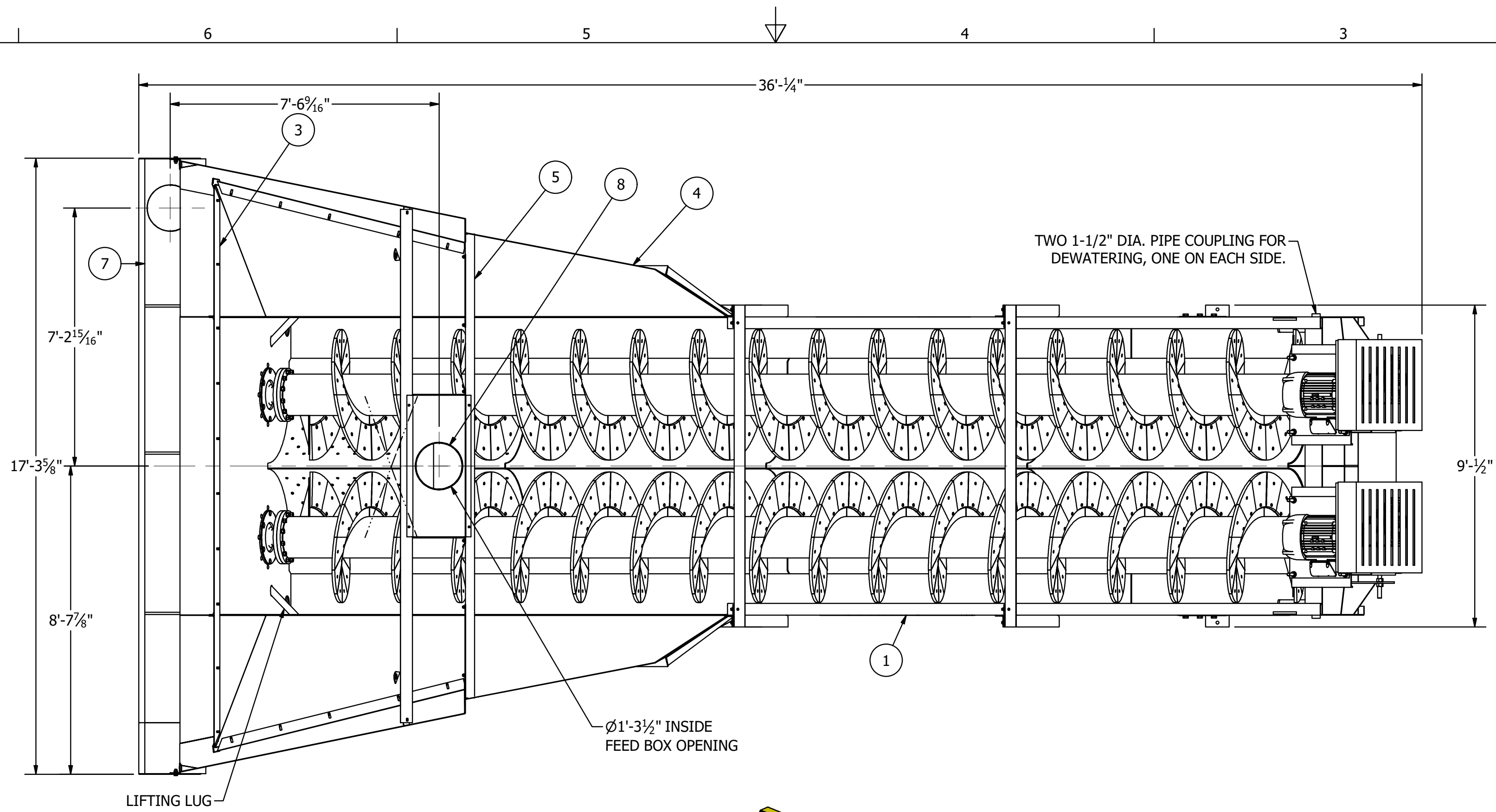


CERTIFICATION		
Aggregate Machinery Specialist Aggregate Machinery Specialist		
CUSTOMER ORDER NUMBER: 16656		
MCLANAHAN SERIAL NUMBER: 20209027		
	DATE	BY
PRELIMINARY PRINT SENT		
APPROVAL DRAWING SENT	6/22/20	DLE
CERTIFIED DIMENSIONAL ACCURACY		
FINAL CERTIFIED DRAWING		

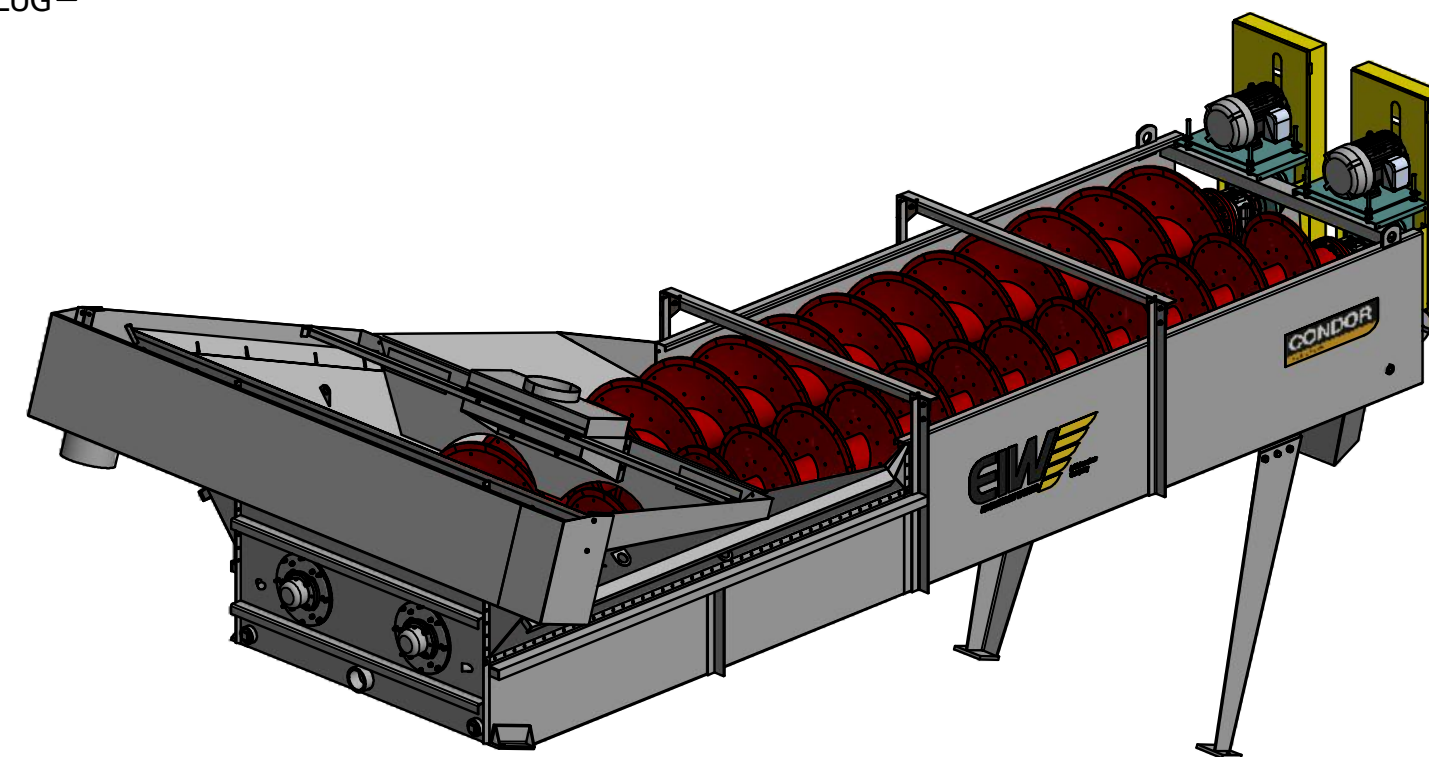


VIEW A-A
DISCHARGE OPENING

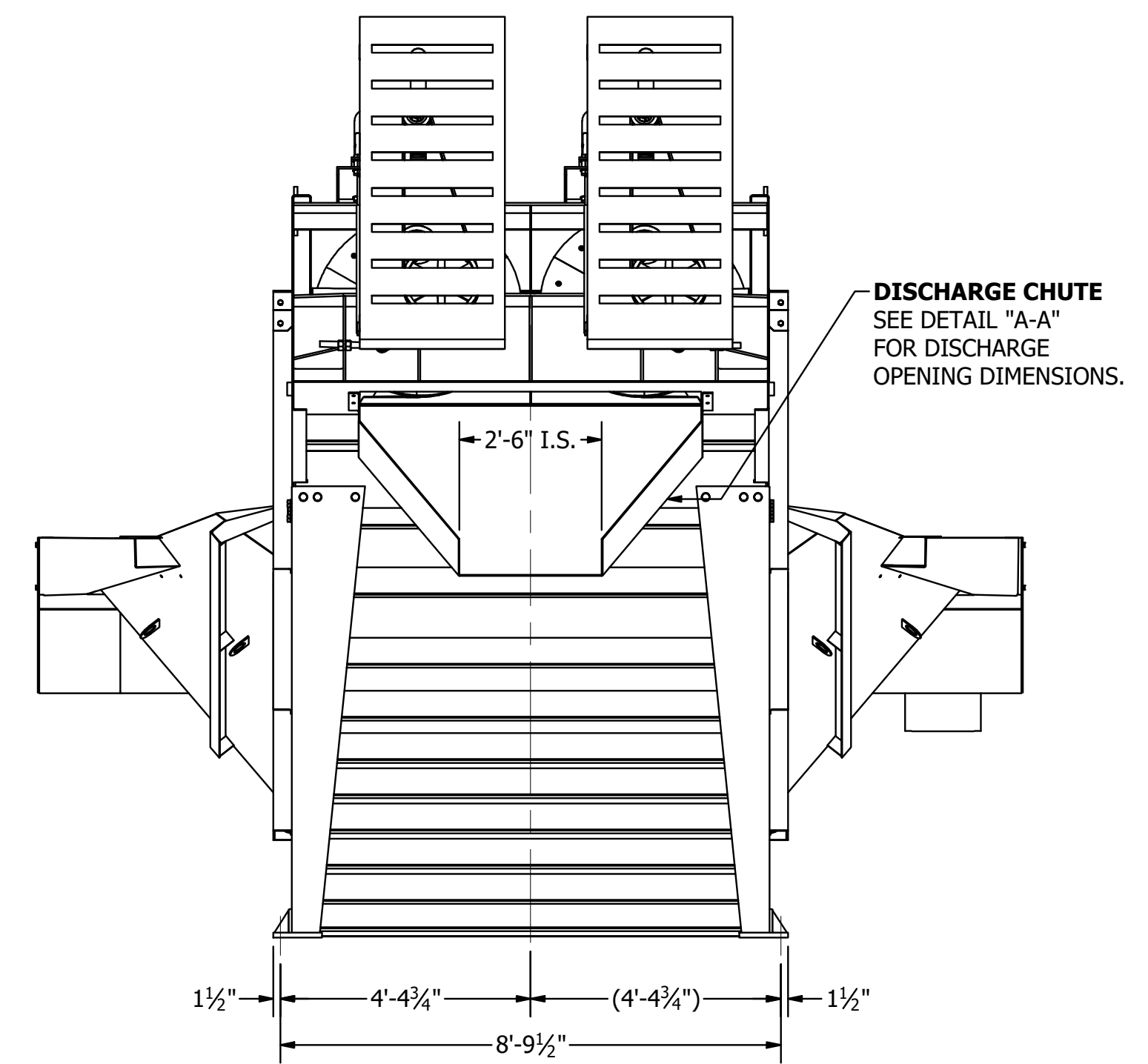
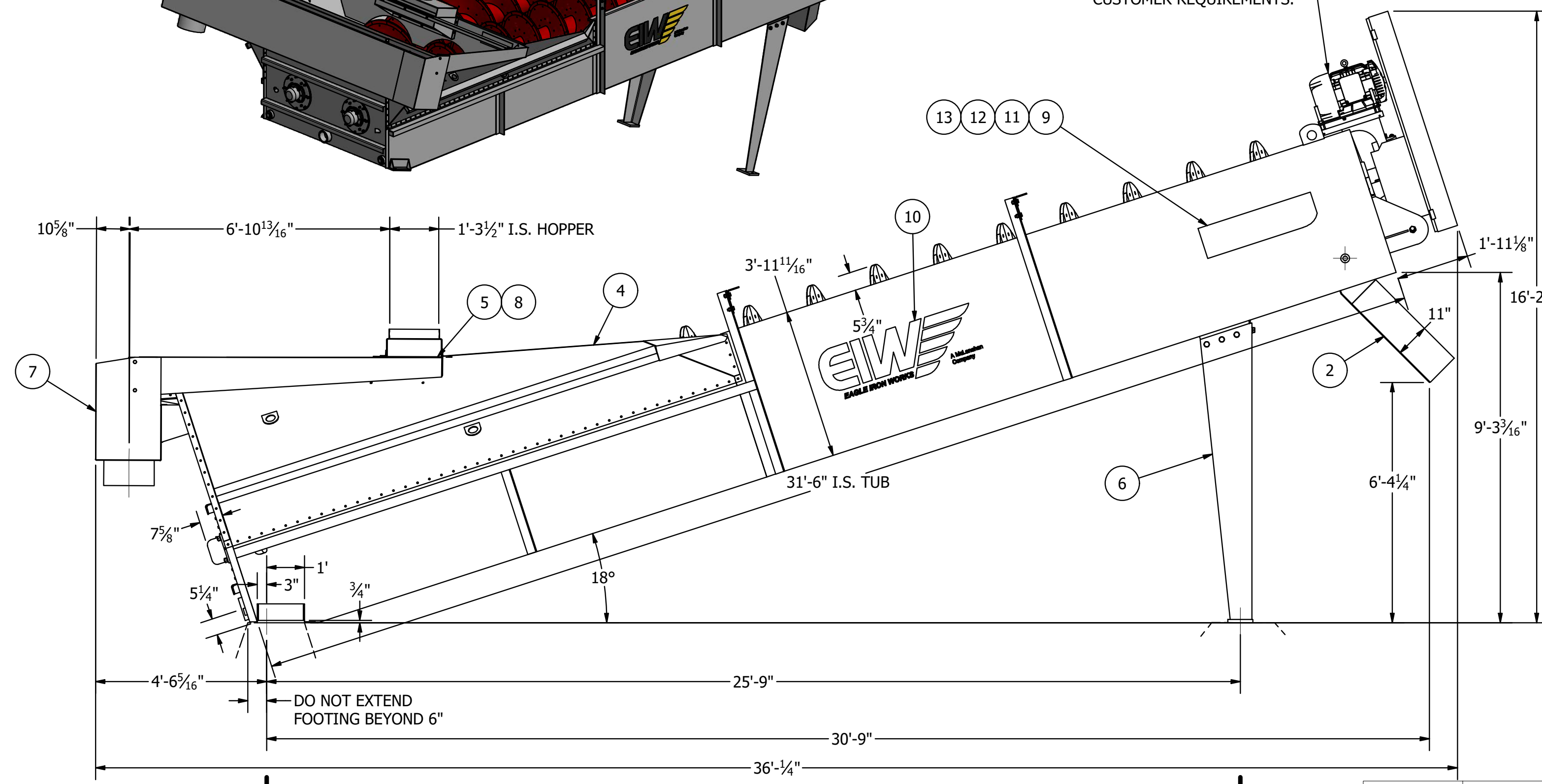
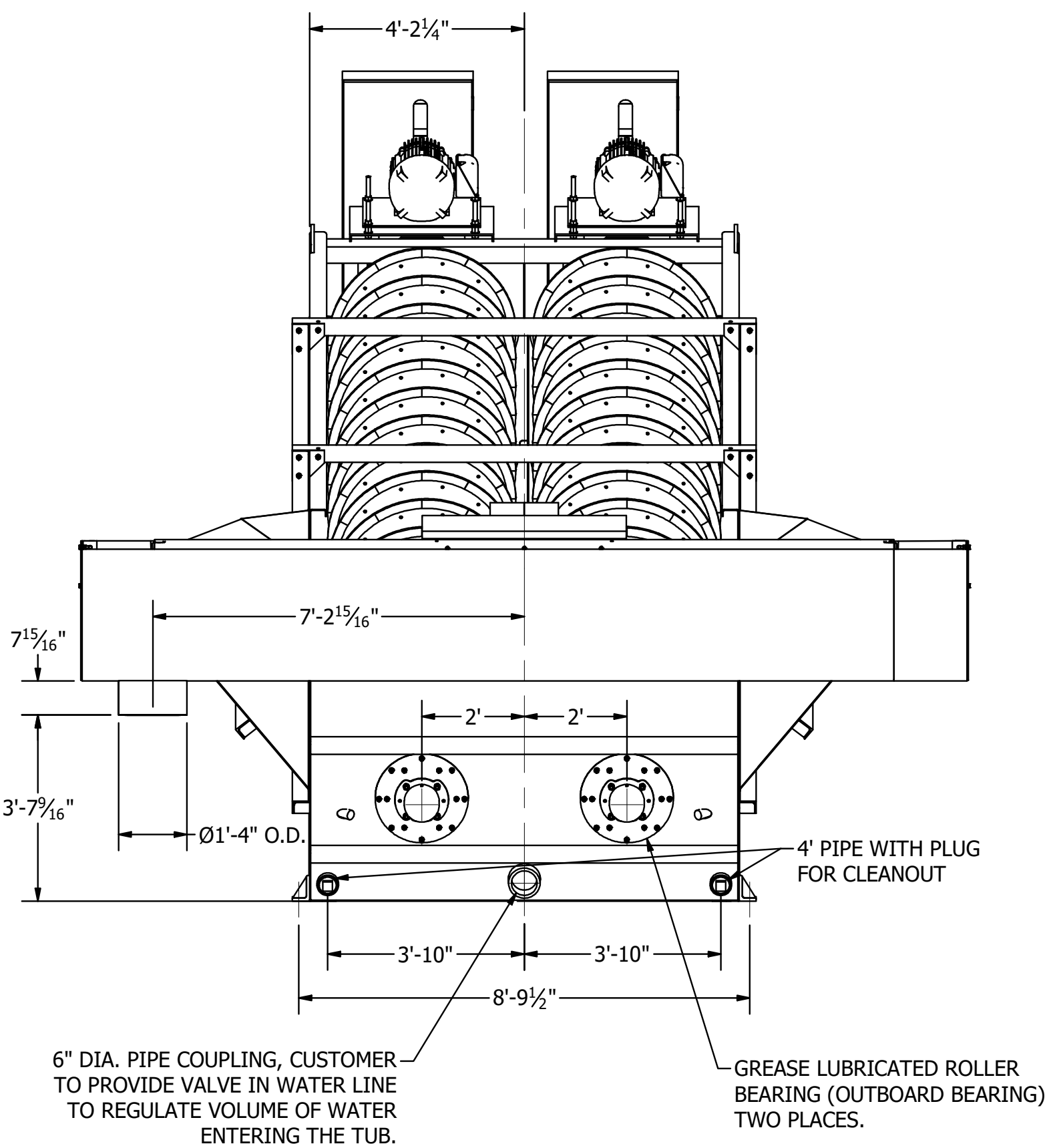


PARTS LIST				
Item	Part Number	Description	Qty	Wt
1	US35000100	TUB ASSEMBLY, CONDOR 44X32 DSFM WASHER, PREMIUM URETHANE SHOES, RED	1	31037
2	A18484	CHUTE, DISCHARGE, 44 IN DF WASHER	1	282
*	294740820	CAPSCREW, HEX HEAD, 0.5X1.25 IN, NC, GRADE 5, ZINC PLATED	4	
*	296507080	NUT, HEX, 0.5 IN, NC, GRADE 5, ZINC PLATED	4	
*	296700800	WASHER, LOCK, 0.5 IN, ZINC PLATED	4	
3	D05929	END WEIR	1	58
*	294740820	CAPSCREW, HEX HEAD, 0.5X1.25 IN, NC, GRADE 5, ZINC PLATED	10	
*	296700800	WASHER, LOCK, 0.5 IN, ZINC PLATED	10	
*	296507080	NUT, HEX, 0.5 IN, NC, GRADE 5, ZINC PLATED	10	
4	A03303	SIDE FLARE ASSEMBLY, 44 & 54 FM WASHER	1	1479
*	294740820	CAPSCREW, HEX HEAD, 0.5X1.25 IN, NC, GRADE 5, ZINC PLATED	138	
*	296700800	WASHER, LOCK, 0.5 IN, ZINC PLATED	138	
*	296507080	NUT, HEX, 0.5 IN, NC, GRADE 5, ZINC PLATED	138	
*	B20758	GASKET KIT, SIDE FLARE ASSEMBLY	1	
5	A15116	FEED BOX ASSEMBLY	1	383
*	294740820	CAPSCREW, HEX HEAD, 0.5X1.25 IN, NC, GRADE 5, ZINC PLATED	6	
*	296700800	WASHER, LOCK, 0.5 IN, ZINC PLATED	6	
*	296507080	NUT, HEX, 0.5 IN, NC, GRADE 5, ZINC PLATED	6	
6	B22078	SUPPORT, WASHER, 66 IN SF & DF AND 44 IN DF WASHER	1	491
*	294741632	CAPSCREW, HEX HEAD, 1" X 2", NC, GRADE 5, ZINC PLATED	12	
*	296701600	WASHER, LOCK, 1", ZINC PLATED	12	
*	296507160	NUT, HEX, 1", NC, GRADE 5, ZINC PLATED	12	
7	A23030	OVERFLOW FLUME	1	722
*	294741028	CAPSCREW, HEX HEAD, 0.625X1.75 IN, NC, GRADE 5, ZINC PLATED	4	
*	296701000	WASHER, LOCK, 0.625 IN, ZINC PLATED	4	
*	296507100	NUT, HEX, 0.625 IN, NC, GRADE 5, ZINC PLATED	4	
8	B02860	INLET COVER, 44, 48, & 54 IN DF WASHER	1	172
9	D43757	DECAL, CONDOR LOGO, MEDIUM	2	7
10	D16639	DECAL, 17.625" X 52.00" EIW LOGO	2	1
11	D03180	NAME PLATE, EIW	1	0
12	D38050	DECAL, KIT, EIW WASHERS	1	0
13	297212003	SCREW, DRIVE, TYPE U, #12 X 1/2 IN ROUND HEAD DRIVE SCREW, ZINC	2	0

* SHIPS LOOSE



DRIVE MOTORS FOR 100% (17 RPM) CONVEYOR SHAFT SPEED. 25 HP, 1800 RPM, DESIGN B, 1.15 SERVICE FACTOR, TEFC, 460/3/60 POWER. MOTORS WILL BE FURNISHED TO MEET CUSTOMER REQUIREMENTS.



NOTES:
ALL ANCHOR BOLTS 7/8" DIA.
MACHINE WEIGHT = 34,500 LB.
LOADED WEIGHT = 122,500 LB.

CAUTION:
DO NOT RESTRICT MATERIAL
DISCHARGE OPENING. POSSIBLE
DAMAGE TO MACHINE MAY RESULT.

FOOTING REACTION
46,500 LBS

UNLESS OTHERWISE NOTED, TOLERANCES ON DIMENSIONS ARE:
Ø .010 IN.
FINISHES: 316 IN.
FABRICATION: 316 IN.
ANGLES: 5°
SURFACE: 1/32



WEIGHT: 34,500 LBS
SHEET NUMBER: 1 OF 1
SCALE: 1:30
DRAWN BY: Deicher
CHECKED BY: IS
THIRD ANGLE PROJECTION
CUSTOMER DRAWING

PART NUMBER: DSFMC44X3220209027
DESCRIPTION: INSTALLATION, 44" X 32" DSFM CONDOR WASHER, OVERFLOW FLUMES, DISCHARGE CHUTES, WASHER SUPPORTS, 100% DRIVE
DATE: 6/22/2020
SHEET SIZE: D
DRAWING NUMBER: US35000099
REVISION: