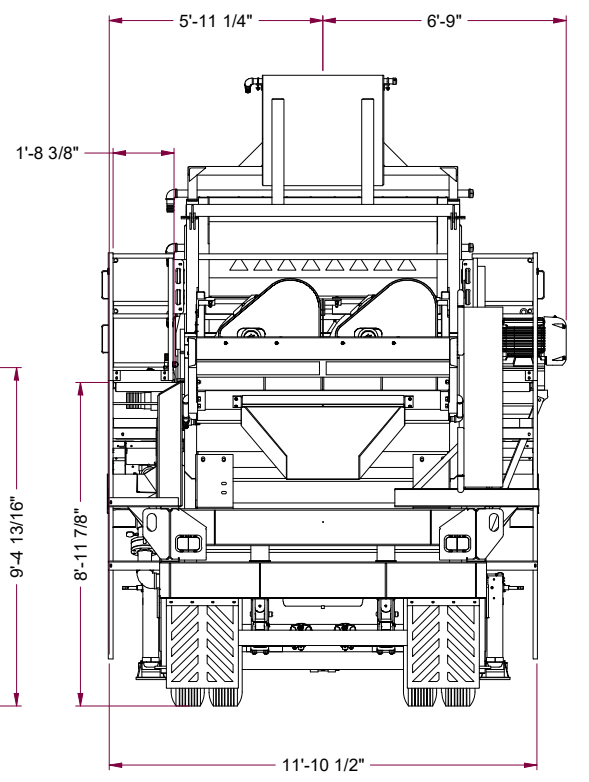
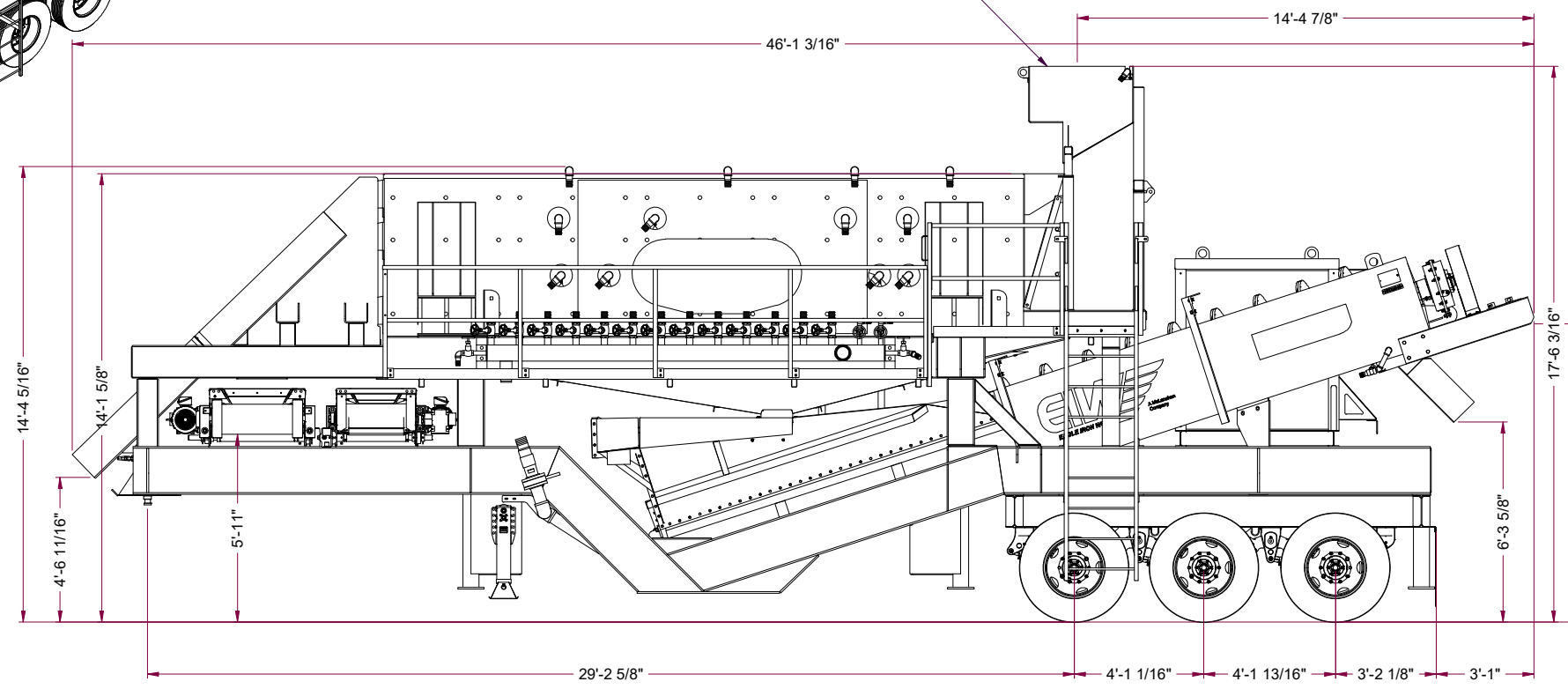


SCREEN FEED BOX FOLDS FOR TRAVEL



**WORKING MODE**



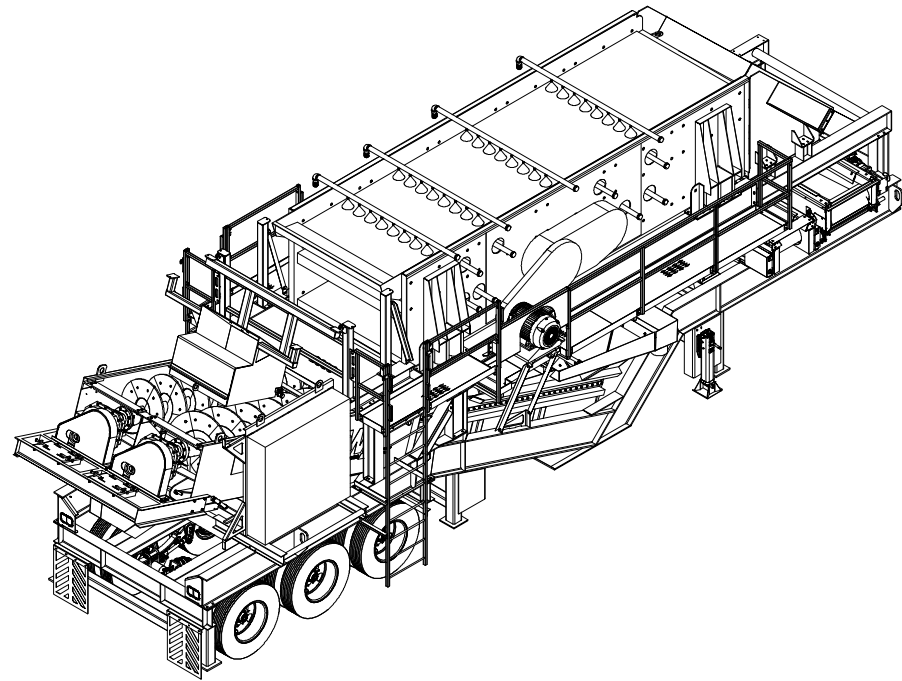
201 E. Quindaro Blvd., Kansas City, Kansas 66115  
 PHONE: 913-342-2240 FAX: 913-342-2237

DESIGNED BY:	A. CHIAVERINI	Portable 6203-DFMC 36x25 Wash Plant	
DRAWN BY:	SRODRIQUEZ	AMS 6203/36X25 DFMW (SALES DRAWING)	
SCALE:	3/16"=1'-0"		
DATE:	9/2/2021		
FILE NAME:	31018-E1 (SALES)	WEIGHT:	N/A

REVISION HISTORY		
REV	DESCRIPTION	DATE
A	REMOVED SPRAY BAR RACK	9/20/2021

THIS DOCUMENT AND ALL INFORMATION CONTAINED HEREIN IS PROPRIETARY AND IS THE EXCLUSIVE PROPERTY OF PEERLESS CONVEYOR AND MANUFACTURING CO. DISCLOSED WITH THE UNDERSTANDING THAT IT WILL BE RETAINED IN CONFIDENCE. NEITHER RECEIPT NOR POSSESSION CONFERS OR TRANSFERS ANY RIGHTS TO REPRODUCE, USE OR DISCLOSE IN WHOLE OR IN PART, DATA CONTAINED HEREIN FOR ANY PURPOSE, WITHOUT THE PRIOR WRITTEN PERMISSION OF PEERLESS CONVEYOR AND MANUFACTURING CO.

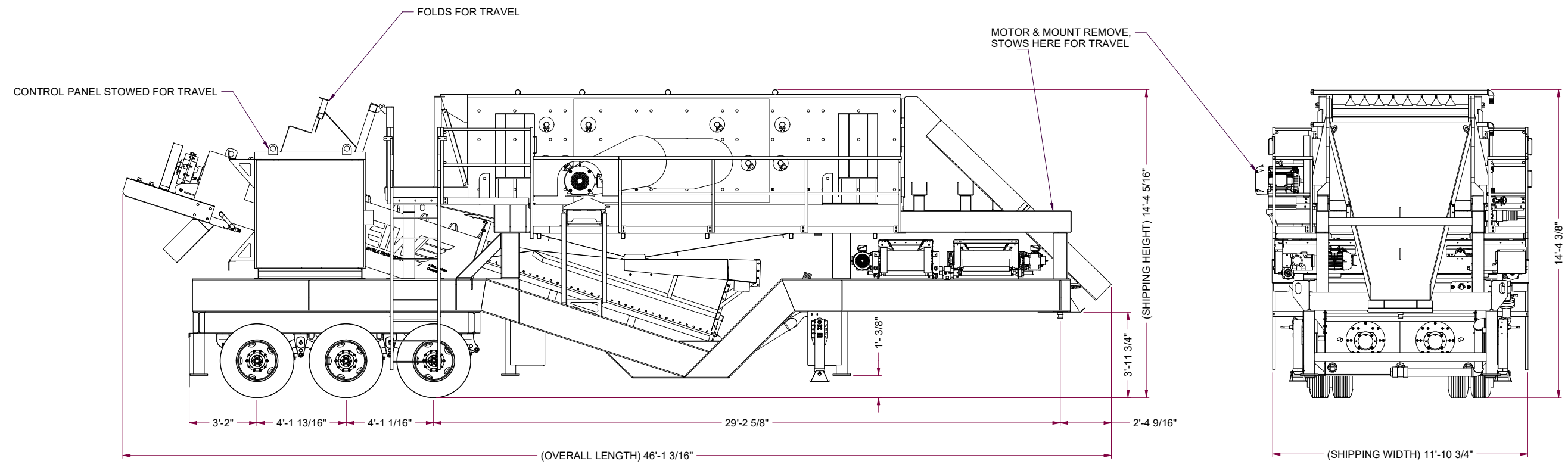
**SHEET**  
1/2



**SHIPPING INFORMATION**

**TOTAL ESTIMATED WEIGHT: 80,000 LBS**  
**WEIGHT ON REAR TRIPLE: 52,269 LBS**  
**WEIGHT ON KING PIN: 27,731 LBS**

**OVERALL LENGTH: 46' 1 3/16"**  
**SHIPPING WIDTH: 11'-10 3/4"**  
**SHIPPING HEIGHT: 14'-4 5/16"**



**TRAVEL MODE**



201 E. Quindaro Blvd., Kansas City, Kansas 66115  
 PHONE: 913-342-2240 FAX: 913-342-2237

THIS DOCUMENT AND ALL INFORMATION CONTAINED HEREIN IS PROPRIETARY AND IS THE EXCLUSIVE PROPERTY OF PEERLESS CONVEYOR AND MANUFACTURING CO. DISCLOSED WITH THE UNDERSTANDING THAT IT WILL BE RETAINED IN CONFIDENCE. NEITHER RECEIPT NOR POSSESSION CONFERS OR TRANSFERS ANY RIGHTS TO REPRODUCE, USE OR DISCLOSE IN WHOLE OR IN PART, DATA CONTAINED HEREIN FOR ANY PURPOSE, WITHOUT THE PRIOR WRITTEN PERMISSION OF PEERLESS CONVEYOR AND MANUFACTURING CO.

<b>DESIGNED BY:</b>	A. CHIAVERINI	Portable 6203-DFMC 36x25 Wash Plant	
<b>DRAWN BY:</b>	SRODRIQUEZ	AMS 6203/36X25 DFMW (SALES DRAWING)	
<b>SCALE:</b>	3/16"=1'-0"		
<b>DATE:</b>	9/2/2021		
<b>FILE NAME:</b>	31018-E1 (SALES)	<b>WEIGHT:</b>	N/A
			<b>SHEET</b> 2/2