

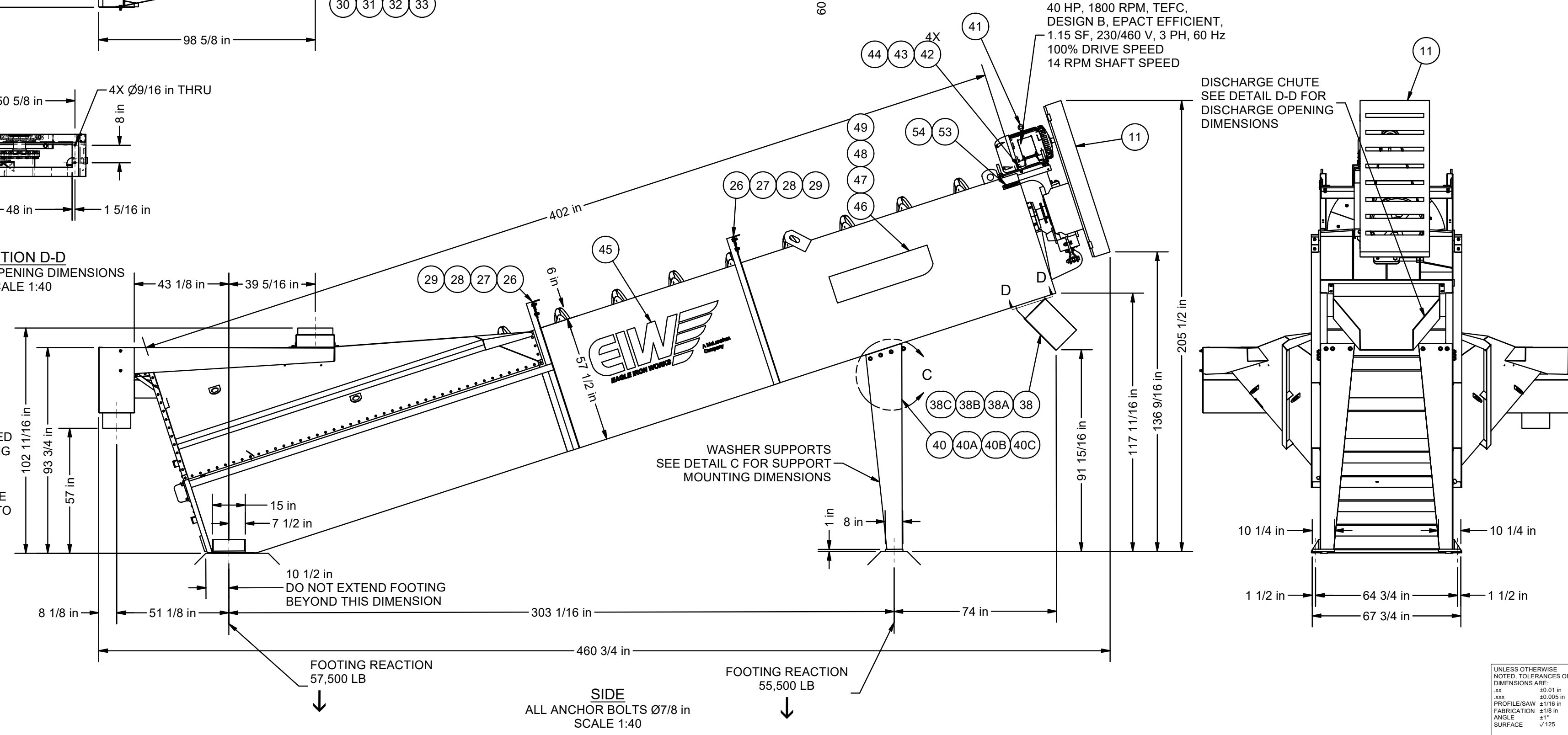
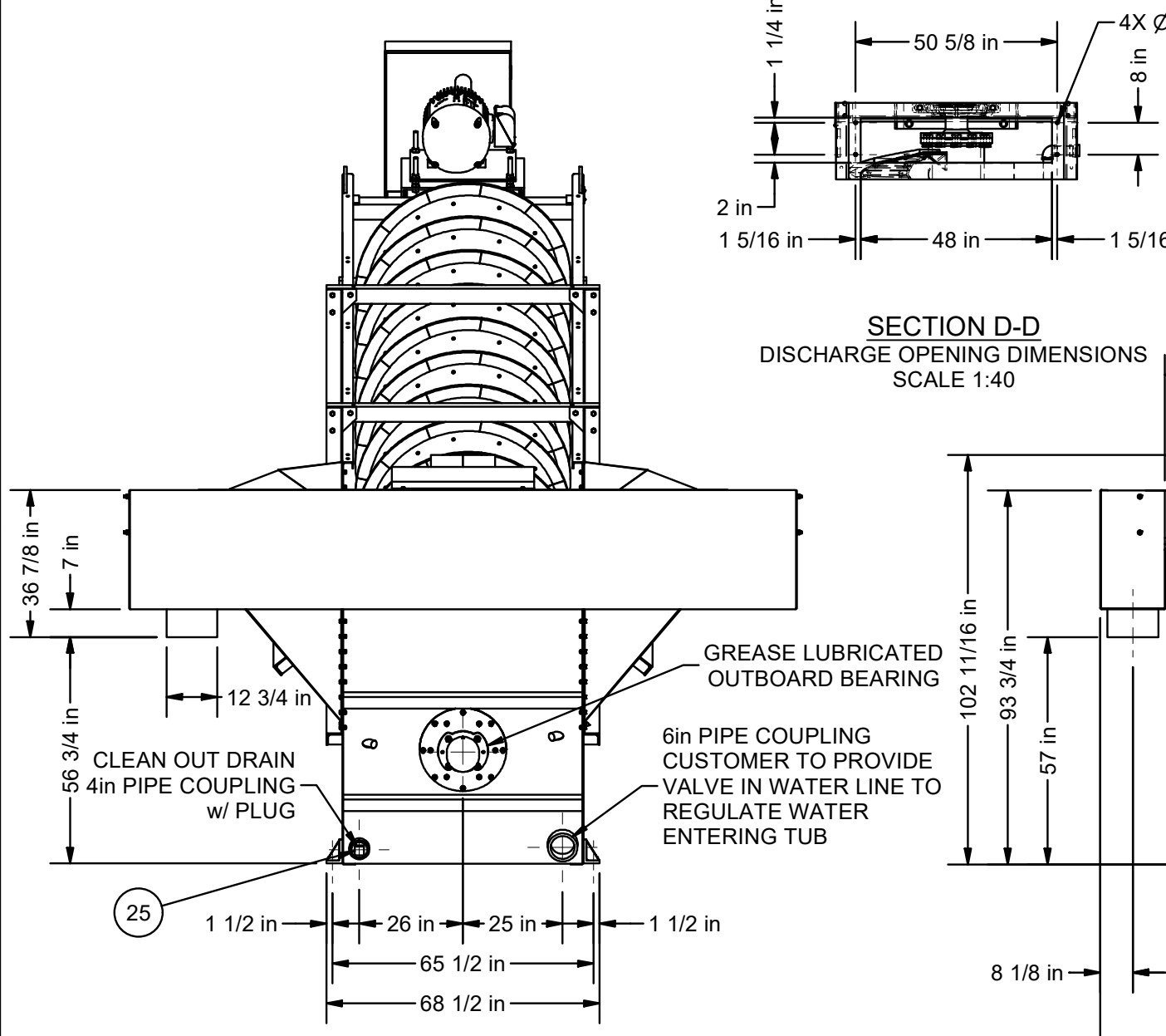
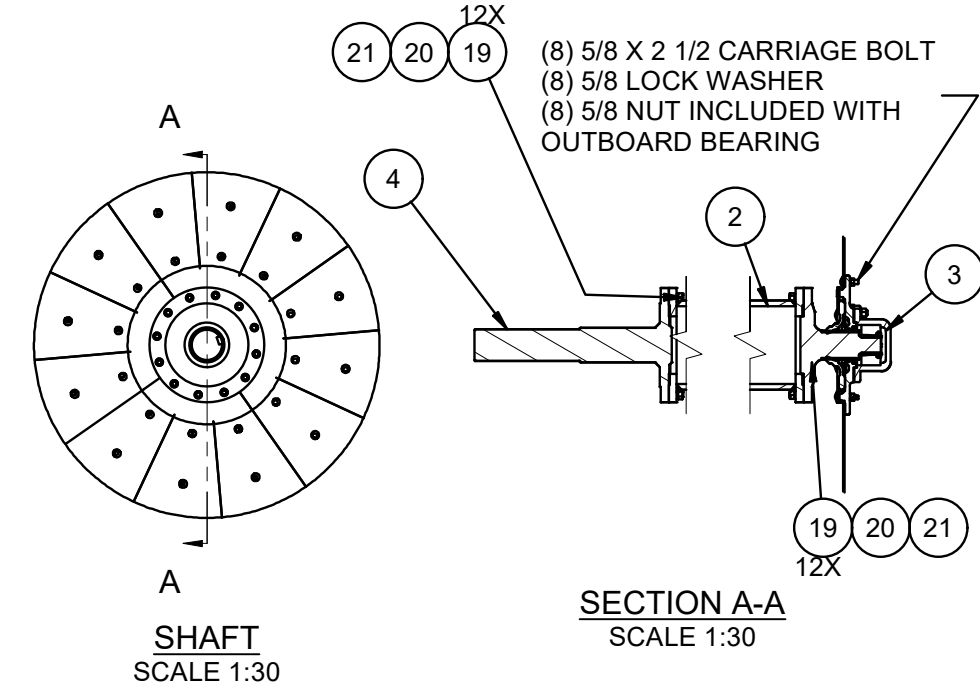
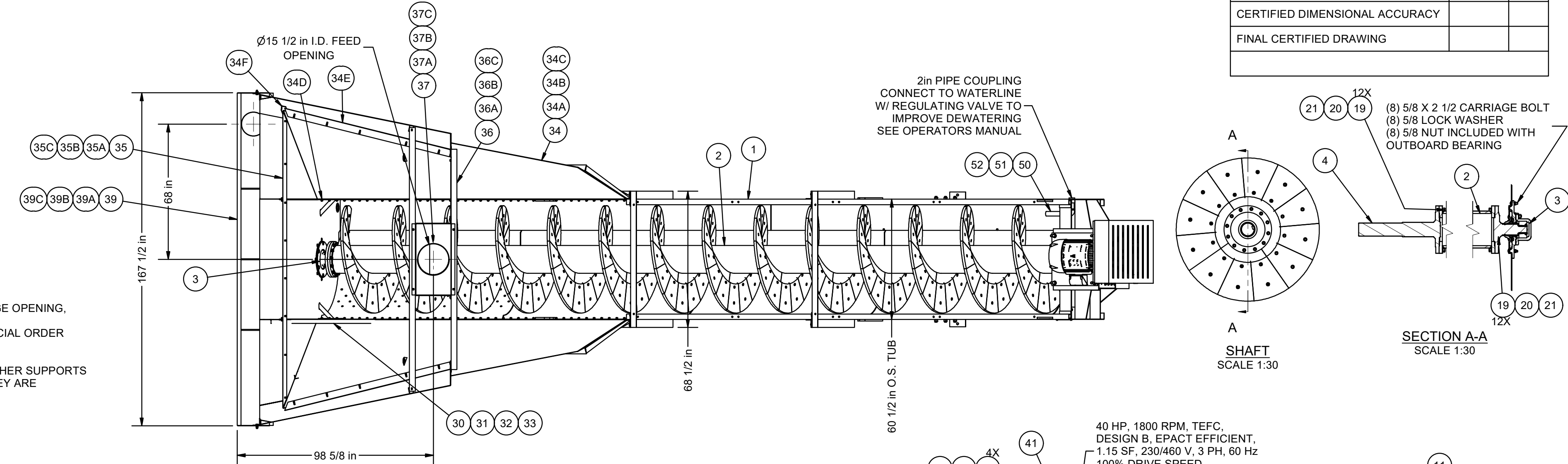
NOTES:
 SPEED REDUCER RATIO: 39.41:1
 SHEAVE RATIO: 3.22:1

PROPER BELT TENSION REQUIRES 5.75 LB TO 8.5 LB OF FORCE TO DEFLECT BELT 0.66" (21/32"). THIS VALUE MUST BE THE AVERAGE OF AT LEAST TWO BELTS. THIS READING IS TAKEN AT MIDPOINT OF BELT SPAN AND 90° TO BELT SURFACE.

OIL FOR TESTING ONLY. REMOVE BEFORE SHIPPING

CERTIFICATION		
Aggregate Machinery Specialist		
CUSTOMER ORDER NUMBER: 16682		
MCLANAHAN SERIAL NUMBER: 20219087		
PRELIMINARY PRINT SENT	DATE	BY
APPROVAL DRAWING SENT	11/24/21	DLE
CERTIFIED DIMENSIONAL ACCURACY		
FINAL CERTIFIED DRAWING		

NOTE:
 1. CAUTION: DO NOT RESTRICT MATERIAL DISCHARGE OPENING, POSSIBLE DAMAGE TO MACHINE MAY RESULT
 2. PERSONNEL SAFETY COVERS AVAILABLE ON SPECIAL ORDER
 3. ALL ANCHOR BOLTS Ø7/8 in
 4. MACHINE WT LOADED = 113,000 LB
 5. OVERFLOW FLUME, DISCHARGE CHUTE, AND WASHER SUPPORTS ARE INCLUDED BY DEFAULT. PLEASE SPECIFY IF THEY ARE NOT REQUIRED
 6. SHIPPING DIMENSION:
 L= 37'-
 W= 5'-9"
 H= 6'-11"



FOOTING REACTION 57,500 LB

FOOTING REACTION 55,500 LB

SIDE ALL ANCHOR BOLTS Ø7/8 in SCALE 1:40

Bill of Materials					
Ships Loose	Item	Qty.	Part Number	Description	Fin Wt
	1	1	A34545	WELDMENT, 54" X 34" SSFM CONDOR WASHER	9203 lbmass
	2	1	US35000268	CONVEYOR SHAFT ASSEMBLY, CONDOR 54" X 34" FMW, RH, W/ WHITE IRON SHOES	12704 lbmass
	3	1	A08286	OUTBOARD BEARING	322 lbmass
	4	1	B23840	STUB SHAFT, DRIVE END	265 lbmass
	5	1	292130009	PILLOW BLOCK HOUSING, 5-7/16" SHAFT	29 lbmass
	6	1	290958700	SPHERICAL ROLLER BEARING, 5-7/16" SHAFT	47 lbmass
	7	1	392130528	ADAPTER, TAPERED BEARING, HYDRAULIC, 5-7/16" SHAFT	18 lbmass
	8	1	294003603	REDUCER, DODGE TA9415H40	729 lbmass
	9	1	292577905	BUSHING KIT, 4-15/16" BORE	11 lbmass
	10	1	294499296	MOTOR MOUNT	293 lbmass
	11	1	294000048	BELT GUARD	182 lbmass
	12	1	293702509	V-BELT PULLEY, 25" OD, 5-3V GROOVES, MACHINED FOR "E" BUSHING	9 lbmass
	13	1	293800639	BUSHING, TYPE "E", 2-7/16" BORE	8 lbmass
	14	1	US54300063	PULLEY, V-BELT, 8 IN OD, 5-3V, SK BUSHING	2 lbmass
	15	1	293800434	BUSHING, TYPE "SK", 2-1/8" BORE	2 lbmass
	16	5	293905140	V-BELT, 3VX1400	3 lbmass
	17	1	294003603A	TORQUE ARM ROD END	4 lbmass
	18	2	296507240	HEX NUT 1 1/2"	2 lbmass
	19	24	295341244	CAPSCREW, SOCKET HEAD, 3/4"-10NC x 2 3/4" LG.	12 lbmass
	20	24	296701200	LOCK WASHER, 3/4"	1 lbmass
	21	24	296576125	HEAVY HEX NUT 3/4"-10NC	5 lbmass
	22	4	294741668	HEX BOLT 1"-8NC X 6" LG	7 lbmass
	23	8	296601600	1" FLAT WASHER	1 lbmass
	24	8	296507160	HEX NUT, 1-8NC	3 lbmass
	25	1	298110801	PIPE PLUG, 4"	6 lbmass
	26	4	D14737	GUSSET, FINE/COARSE/LOG WASHERS	13 lbmass
	27	12	294741024	HEX BOLT, 5/8-11NC x 1.5" LG	3 lbmass
	28	12	296701000	WASHER, LOCK, 5/8", ZINC PLATED	0 lbmass
	29	12	296507100	NUT, HEX, 5/8", NC, GRADE 5, ZINC PLATED	1 lbmass
	30	1	D31020	SHIPPING BRACE	13 lbmass
	31	2	294740820	HEX BOLT, 1/2-13NC x 1.25" LG	0 lbmass
	32	2	296700800	WASHER, LOCK, 0.5 IN, ZINC PLATED	0 lbmass
	33	2	296507080	HEX NUT, 1/2-13NC, GRADE 5, ZINC PLATED	0 lbmass
*	34	1	A03303	SIDE FLARE ASSEMBLY, 44 & 54 FM WASHER	1501 lbmass
CONTAINS:					
128"	34A	138	294740820	CAPSCREW, HEX HEAD, 0.5X1.25 IN, NC, GRADE 5, ZINC PLATED	
128"	34B	138	296700800	WASHER, LOCK, 0.5 IN, ZINC PLATED	
128"	34C	138	296507080	NUT, HEX, 0.5 IN, NC, GRADE 5, ZINC PLATED	
34D	1		B20758	GASKET	
34E	2		D07562	WEIR	
34F	2		D16062	WEIR CORNER	
*	35	1	D05930	WEIR, END, 54 IN SF WASHER	45 lbmass
CONTAINS:					
35A	8		294740820	CAPSCREW, HEX HEAD, 0.5X1.25 IN, NC, GRADE 5, ZINC PLATED	
35B	8		296700800	WASHER, LOCK, 0.5 IN, ZINC PLATED	
35C	8		296507080	NUT, HEX, 0.5 IN, NC, GRADE 5, ZINC PLATED	
*	36	1	B10436	FEED BOX ASSEMBLY	267 lbmass
CONTAINS:					
36A	6		294740820	CAPSCREW, HEX HEAD, 0.5X1.25 IN, NC, GRADE 5, ZINC PLATED	
36B	6		296700800	WASHER, LOCK, 0.5 IN, ZINC PLATED	
36C	6		296507080	NUT, HEX, 0.5 IN, NC, GRADE 5, ZINC PLATED	
*	37	1	B02865	INLET COVER, 44, 48, & 54 IN SF WASHER	132 lbmass
CONTAINS:					
37A	4		294740820	CAPSCREW, HEX HEAD, 0.5X1.25 IN, NC, GRADE 5, ZINC PLATED	
37B	4		296700800	WASHER, LOCK, 0.5 IN, ZINC PLATED	
37C	4		296507080	NUT, HEX, 0.5 IN, NC, GRADE 5, ZINC PLATED	
*	38	1	A18446	DISCHARGE CHUTE	189 lbmass
CONTAINS:					
38A	4		294740824	CAPSCREW, HEX HEAD, 0.5X1.5 IN, NC, GRADE 5, ZINC PLATED	
38B	4		296700800	WASHER, LOCK, 0.5 IN, ZINC PLATED	
38C	4		296507080	NUT, HEX, 0.5 IN, NC, GRADE 5, ZINC PLATED	
*	39	1	A28870	WATER OVERFLOW FLUME, 54" SF WASHER	529 lbmass
CONTAINS:					
39A	4		294741028	CAPSCREW, HEX HEAD, 0.625X1.75 IN, NC, GRADE 5, ZINC PLATED	
39B	4		296701000	WASHER, LOCK, 0.625 IN, ZINC PLATED	
39C	4		296507100	NUT, HEX, 0.625 IN, NC, GRADE 5, ZINC PLATED	
*	40	1	B10305	WASHER SUPPORTS	489 lbmass
CONTAINS:					
40A	12		294741632	CAPSCREW, HEX HEAD, 1X2 IN, NC, GRADE 5, ZINC PLATED	
40B	12		296701600	WASHER, LOCK, 1 IN, ZINC PLATED	
40C	12		296507160	NUT, HEX, 1 IN, NC, GRADE 5, ZINC PLATED	
41	1		D39188	MOTOR, 40 HP, 1800 RPM, TEFC, 324T FRAME, DESIGN "B"	577 lbmass
42	4		294741040	CAPSCREW, HEX HEAD, 0.625X2.5, NC, GRADE 5, ZINC PLATED	1 lbmass
43	4		296701000	WASHER, LOCK, 0.625, ZINC PLATED	0 lbmass
44	4		296507100	NUT, HEX, 0.625, NC, GRADE 5, ZINC PLATED	0 lbmass
45	2		D12634	DECAL, 21.75" X 64.50" EIW LOGO	2 lbmass
46	2		D43819	DECAL, CONDOR LOGO, LARGE	10 lbmass
47	1		D38050	DECAL, KIT, EIW WASHERS	0 lbmass
48	1		D03180	NAME PLATE, EIW	0 lbmass
49	2		297212003	SCREW, DRIVE, TYPE U, #12 X 1/2 IN ROUND HEAD DRIVE SCREW, ZINC	0 lbmass
50	1		298170848	PIPE NIPPLE, 2 IN X 12 IN LONG, THREADED ONE END	4 lbmass
51	1		298170849	2" DIA X 5" LG PIPE NIPPLE	1 kg
52	1		D19782	2" DIA X 90 DEG ELBOW	2 lbmass
53	1		PIDP20219087	IDENTIFICATION PLATE, PROJECT ID 20219087	1 lbmass
54	2		US50800152	DRIVE SCREW, #14-9 X 0.75 IN, TYPE U, ROUND HEAD, 18-8 SST	0 lbmass
55	13		US51800054	PRIMER, MIXED/SPRAYABLE, GREY, DURASPAR PRIME HIGH SPEED	0 lbmass
56	13		US51800008	PAINT, MIXED/SPRAYABLE, EIW GRAY, RAL 7005, DURASPAR R-CURE 800 URETHANE	0 lbmass
57	7		US51800003	PAINT, MIXED/SPRAYABLE, SAFETY YELLOW, RAL 1023, DURASPAR R-CURE 800 URETHANE	0 lbmass
58	5		190000021	OIL, NON-EP GEAR REDUCER LUBRICANT	0 lbmass

EIW

WEIGHT: 25,955 LBS

SCALE: 1 OF 1

PART NUMBER: SSMFC54X3420219087

UNLESS OTHERWISE NOTED, TOLERANCES ON DIMENSIONS ARE:

0.001 in. ±

0.002 in. ±

0.005 in. ±

0.010 in. ±

0.015 in. ±

0.030 in. ±

0.060 in. ±

0.125 in. ±

0.250 in. ±

0.500 in. ±

1.000 in. ±

2.000 in. ±

5.000 in. ±

10.000 in. ±

25.000 in. ±

50.000 in. ±

100.000 in. ±

250.000 in. ±

500.000 in. ±

1000.000 in. ±

2500.000 in. ±

5000.000 in. ±

10000.000 in. ±

DESCRIPTION: ASSEMBLY DRAWING

DATE: 11/24/2021

DRAWN BY: DLE

CHECKED BY: IS

APPROVED BY:

1ST ISSUE DATE: 11/24/2021

SHEET NO: D

DRAWING NUMBER: US35000349

REVISION: