

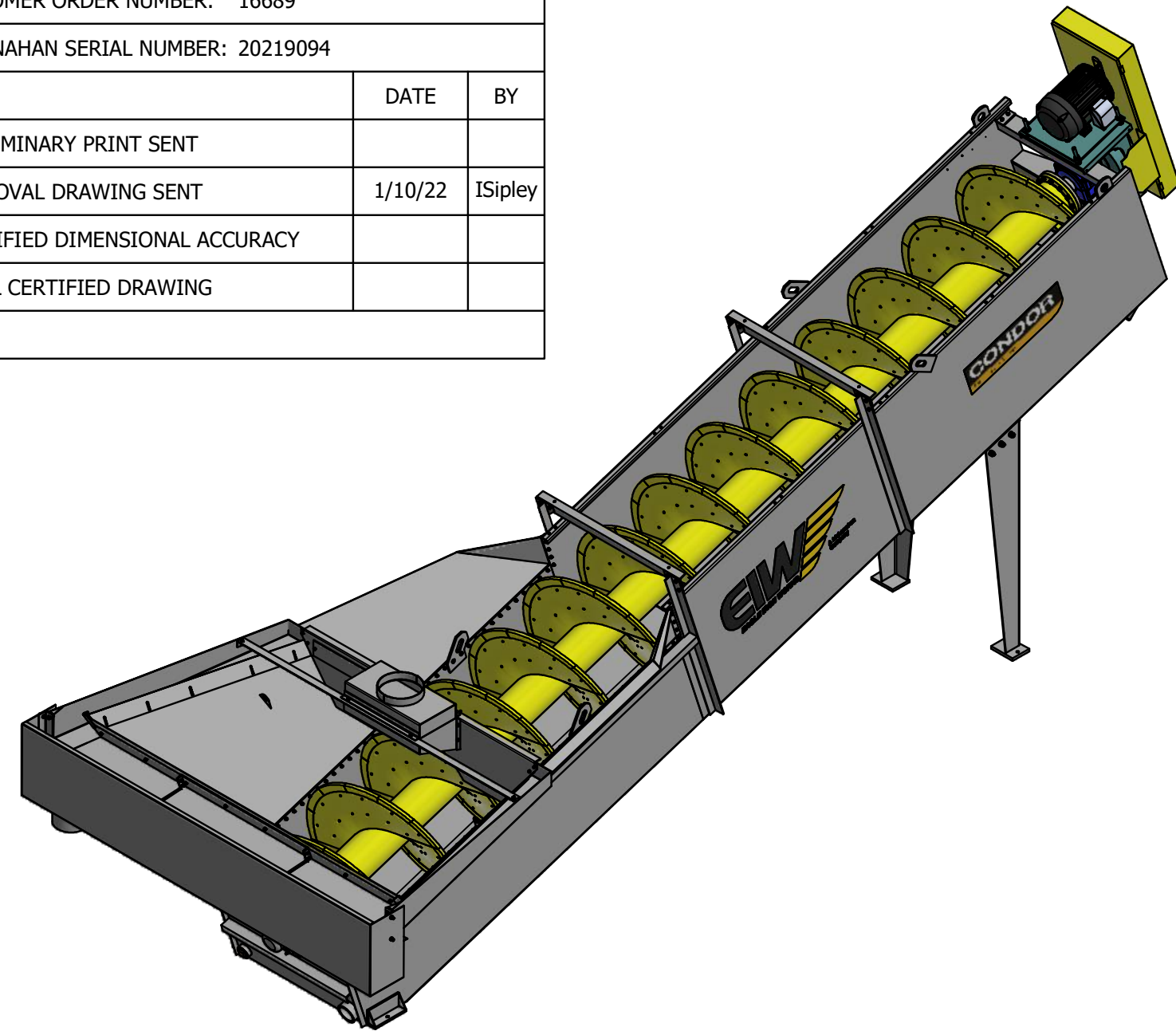
CERTIFICATION

Aggregate Machinery Specialist

CUSTOMER ORDER NUMBER: 16689

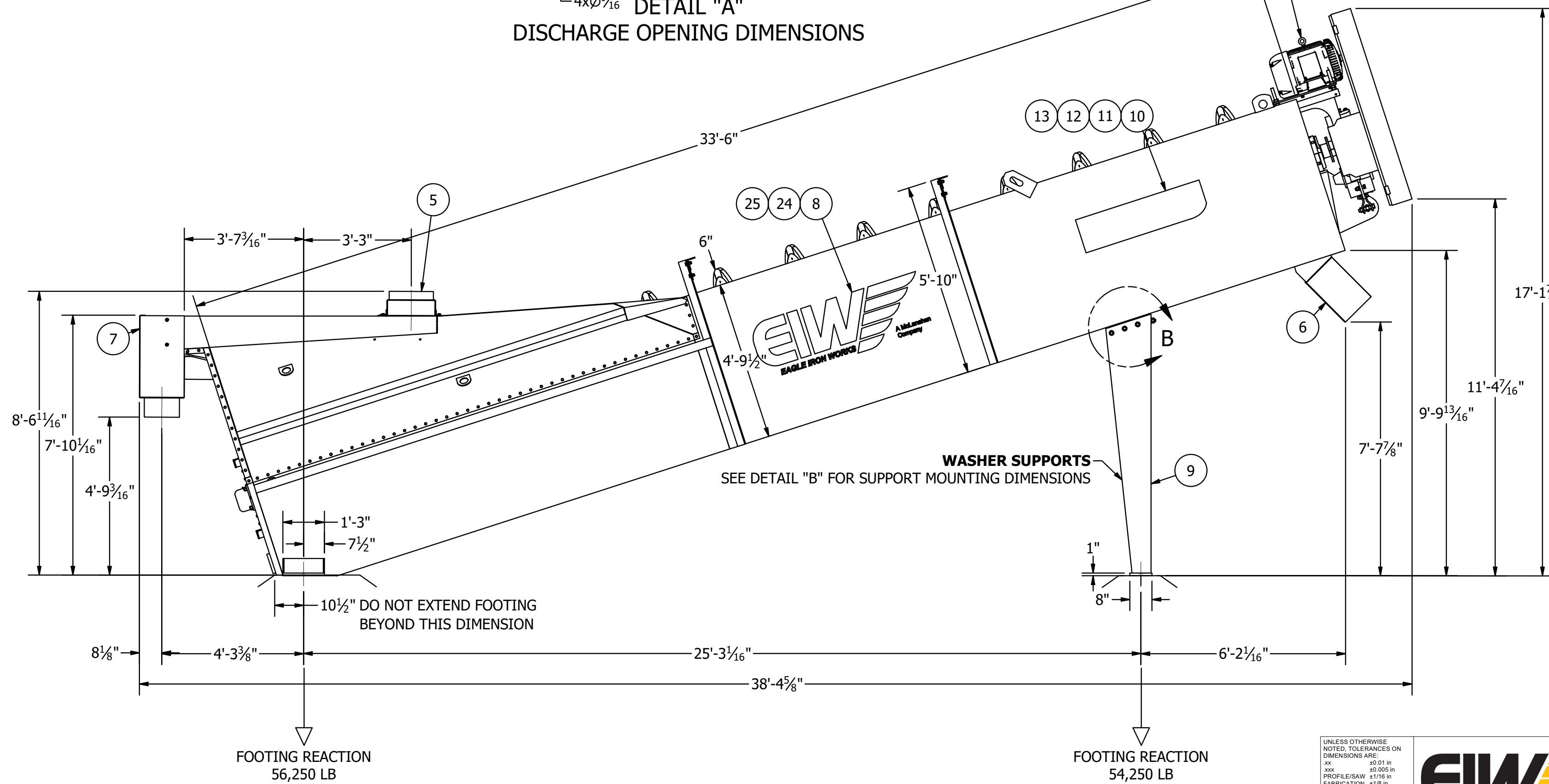
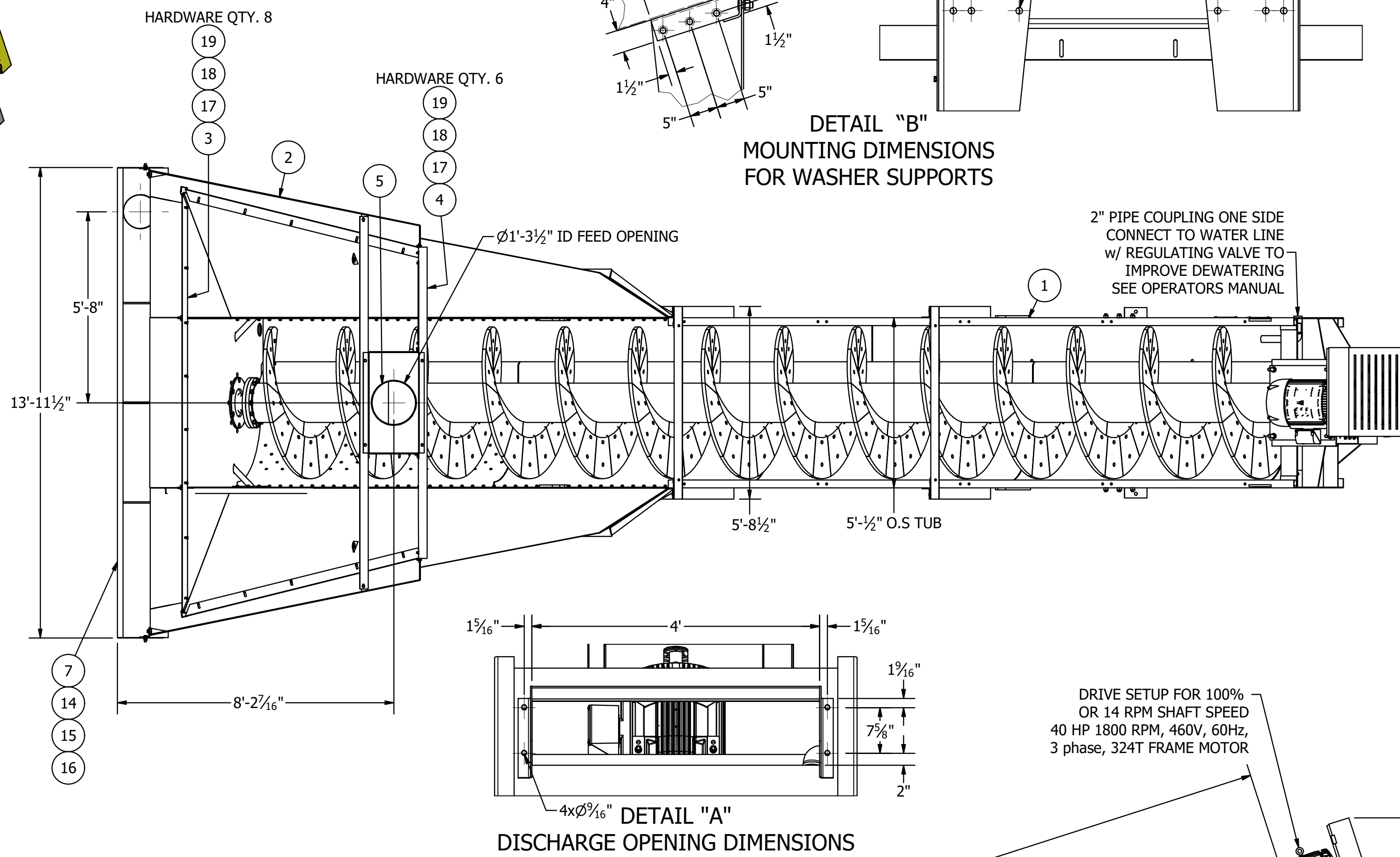
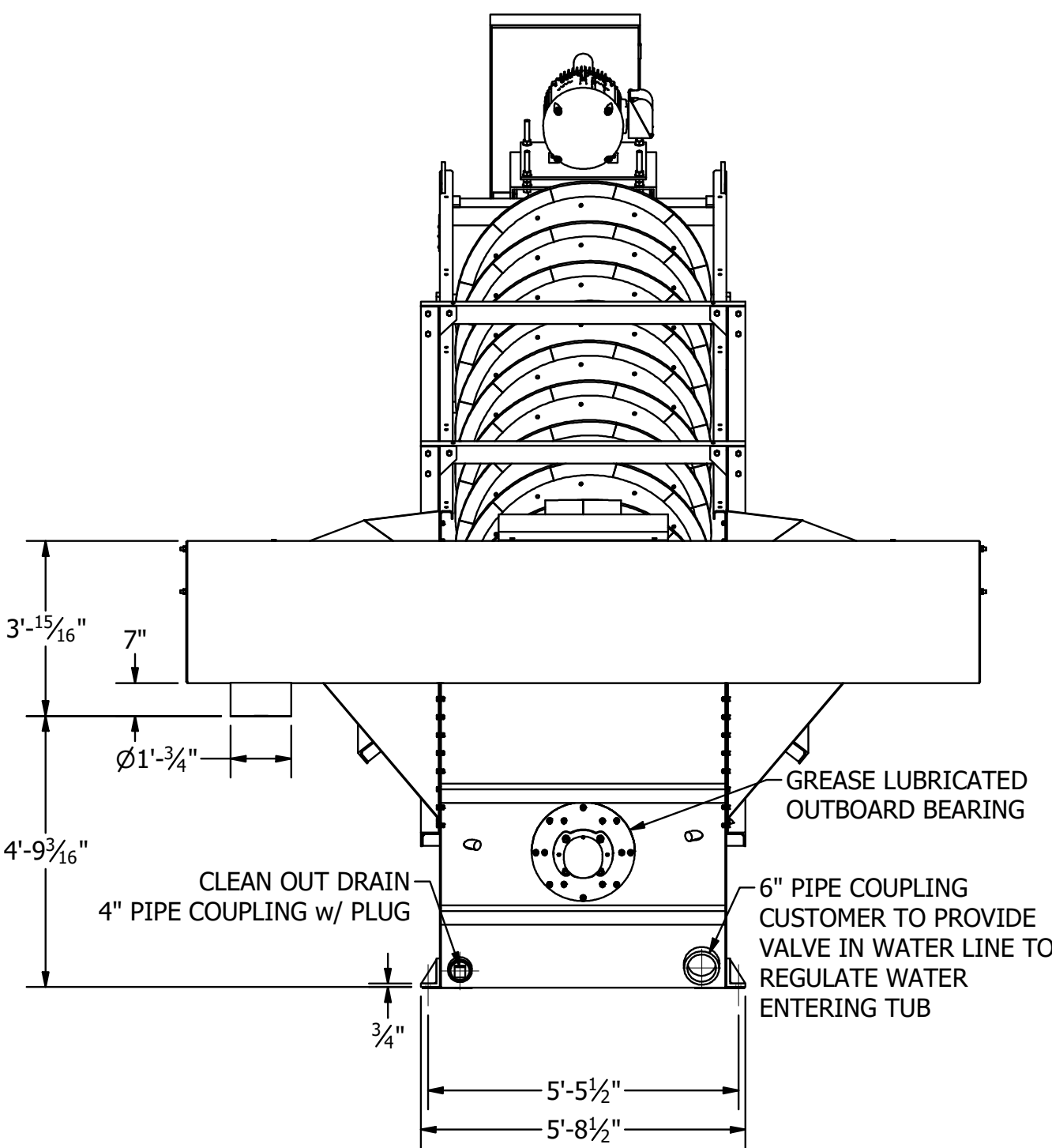
MCLANAHAN SERIAL NUMBER: 20219094

	DATE	BY
PRELIMINARY PRINT SENT		
APPROVAL DRAWING SENT	1/10/22	ISiplay
CERTIFIED DIMENSIONAL ACCURACY		
FINAL CERTIFIED DRAWING		



- NOTES:**
- CAUTION: DO NOT RESTRICT MATERIAL DISCHARGE OPENING, POSSIBLE DAMAGE TO MACHINE MAY RESULT
 - PERSONNEL SAFETY COVERS AVAILABLE ON SPECIAL ORDER
 - ALL ANCHOR BOLTS 7/8" DIA
 - MACHINE WT LOADED = 110,500 LB
 - OVERFLOW FLUME, DISCHARGE CHUTE, AND WASHER SUPPORTS ARE INCLUDED BY DEFAULT. PLEASE SPECIFY IF THEY ARE NOT REQUIRED.
 - SHIPPING DIMENSIONS:

L: 38' 2 1/2"
W: 5' 8 1/2"
H: 8' 6 1/16"



PARTS LIST

SHIP LOOSE	Item	Part Number	Description	Qty	Wt
	1	US35000364	ASSEMBLY, 54 IN X 34 FT SSFM CONDR, 100% 40 HP DRIVE, CONVEYOR SHAFTS W/ WHITE IRON WEAR SHOES	1	24491
*	2	A03303	SIDE FLARE ASSEMBLY, 44 & 54 FM WASHER	1	1500
*	*	D16062	CORNER WEIR, FORMED, FM WASHER	2	1
*	*	B20758	GASKET SET, LARGE SIDE FLARES	2	24
*	*	296700800	WASHER, LOCK, 0.5 IN, ZINC PLATED	128	2
*	*	294740820	HEX BOLT, 1/2-13NC x 1.25" LG	128	15
*	*	296507080	HEX NUT, 1/2-13NC, GRADE 5, ZINC PLATED	128	5
*	3	D05930	END WEIR	1	45
*	4	B10436	FEED BOX ASSEMBLY	1	267
*	5	B02865	INLET COVER, 44, 48, & 54 IN SF WASHER	1	132
*	6	A18446	DISCHARGE CHUTE	1	189
*	*	294740820	HEX BOLT, 1/2-13NC x 1.25" LG	4	0
*	*	296700800	WASHER, LOCK, 0.5 IN, ZINC PLATED	4	0
*	*	296507080	HEX NUT, 1/2-13NC, GRADE 5, ZINC PLATED	4	0
*	7	A28870	WATER OVERFLOW FLUME, 54" SF WASHER	1	529
*	8	D12634	DECAL, 21.75" X 64.50" EIW LOGO	2	2
*	9	B10305	WASHER SUPPORTS (INCLUDES HARDWARE)	1	489
*	*	294741632	CAPSCREW, HEX HEAD, 1" X 2", NC, GRADE 5, ZINC PLATED	12	9
*	*	296701600	WASHER, LOCK, 1", ZINC PLATED	12	1
*	*	296507160	NUT, HEX, 1", NC, GRADE 5, ZINC PLATED	12	4
*	10	D43819	DECAL, CONDR LOGO, LARGE	2	10
*	11	D38050	DECAL, KIT, EIW WASHERS	1	0
*	12	D03180	NAME PLATE	1	1
*	13	297212003	SCREW, DRIVE, TYPE U, #12 X 1/2 IN ROUND HEAD DRIVE SCREW, ZINC	2	0
*	14	294741028	CAPSCREW, HEX HEAD, 5/8" X 1 3/4", NC, GRADE 5, ZINC PLATED	4	1
*	15	296701000	WASHER, LOCK, 5/8", ZINC PLATED	4	0
*	16	296507100	NUT, HEX, 5/8", NC, GRADE 5, ZINC PLATED	4	0
*	17	294740820	HEX BOLT, 1/2-13NC x 1.25" LG	14	2
*	18	296700800	WASHER, LOCK, 0.5 IN, ZINC PLATED	14	0
*	19	296507080	HEX NUT, 1/2-13NC, GRADE 5, ZINC PLATED	14	1
*	24	PIDP20219094	IDENTIFICATION PLATE, PROJECT ID 20219094	1	1
*	25	US50800152	DRIVE SCREW, #14-9 X 0.75 IN, TYPE U, ROUND HEAD, 18-8 SST	2	0

* = SHIP LOOSE
ITEMS NUMBERED 8, 10, & 11 TO BE USED FROM STOCK JOB #064401

UNLESS OTHERWISE NOTED, TOLERANCES ON DIMENSIONS ARE: 0.01 IN. ± 0.001 IN. PROFILES ± 0.1 IN. ± 0.001 IN. FABRICATION ± 0.1 IN. ± 0.001 IN. ANGLE ± 0.1 IN. ± 0.001 IN. SURFACE

WEIGHT: 27,705 LB
DESCRIPTION: 1 OF 1
SCALE: 1:32
PART NUMBER: SSFMC54X3420219094

THIS DRAWING IS THE PROPERTY OF MCLANAHAN CORPORATION AND SHALL NOT BE REPRODUCED OR COPIED IN ANY MANNER WITHOUT THE WRITTEN PERMISSION OF MCLANAHAN CORPORATION. ANY UNAUTHORIZED REPRODUCTION OR USE OF THIS DRAWING IS PROHIBITED AND WILL BE PROSECUTED TO THE FULL EXTENT OF THE LAW.

APPROVED BY: ISiplay
DATE: 1/10/2022
SHEET SIZE: D
DRAWING NUMBER: US35000365