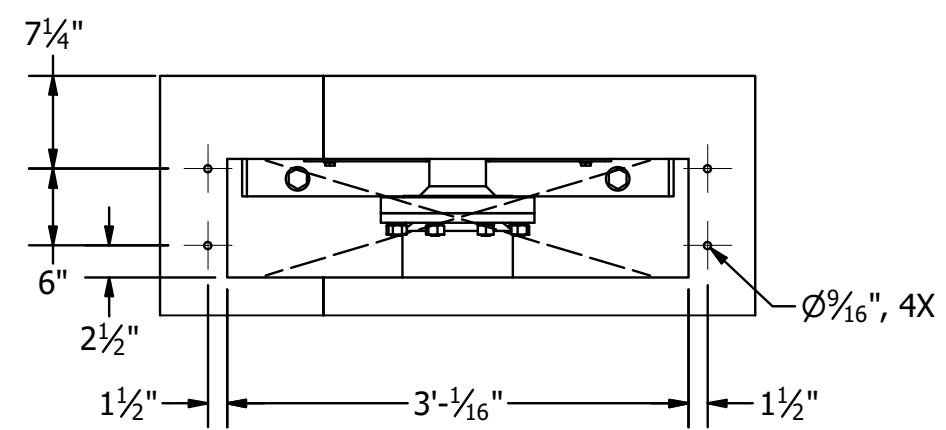
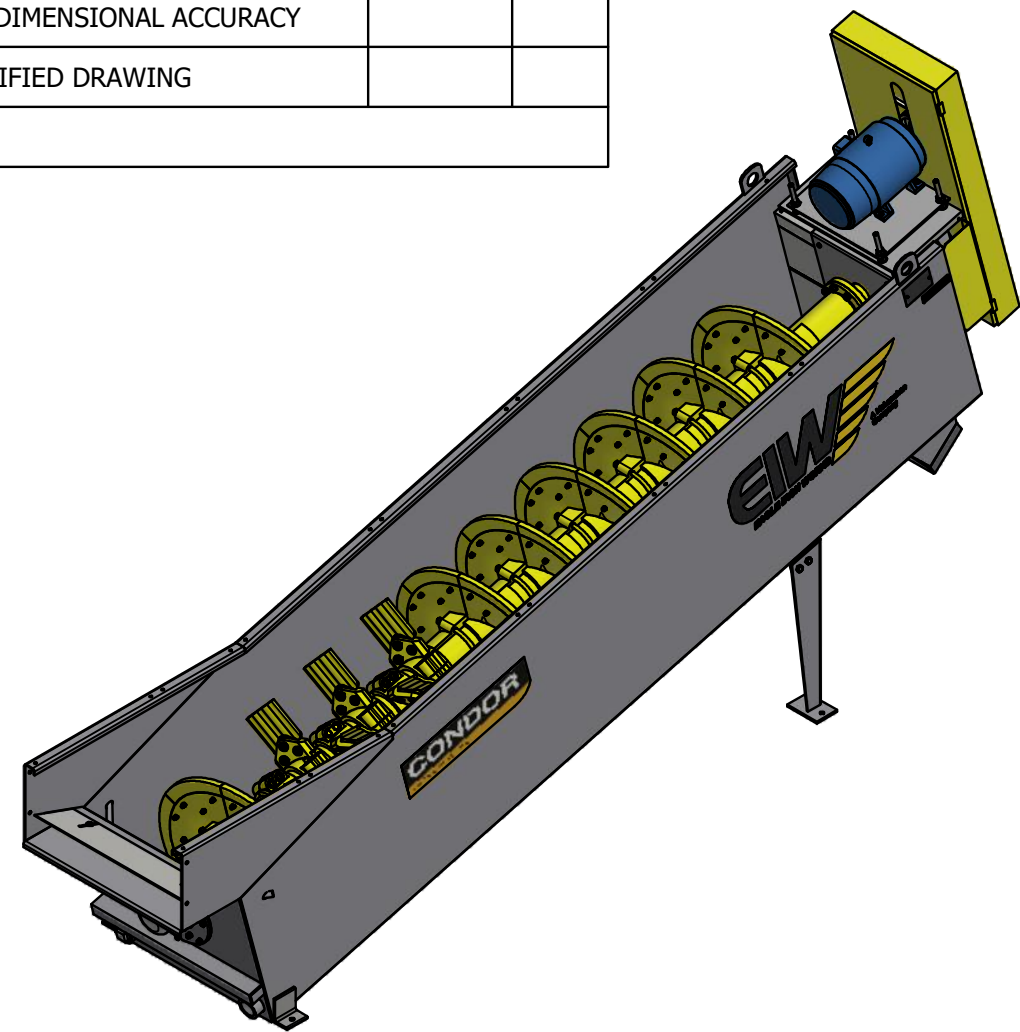
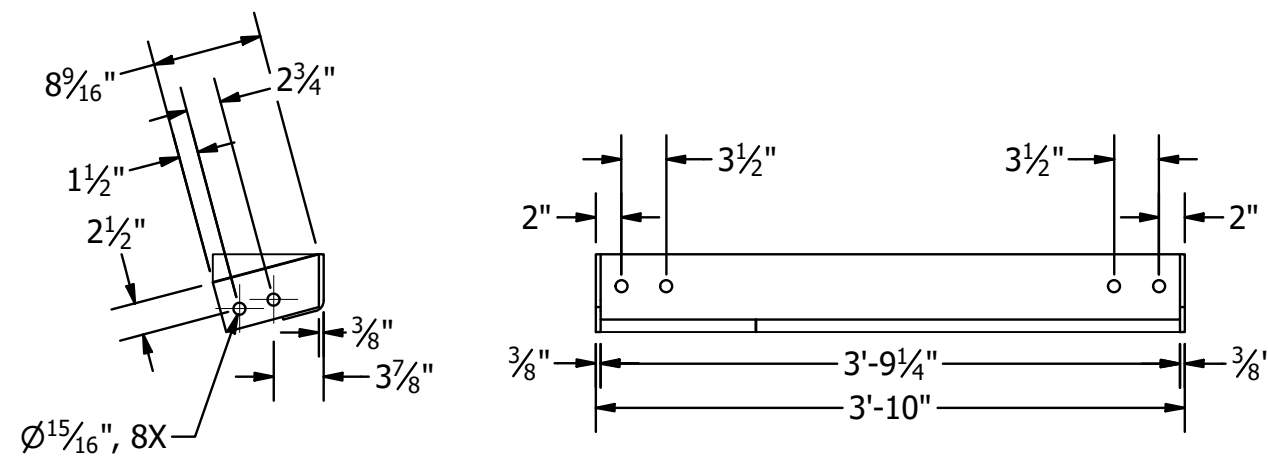


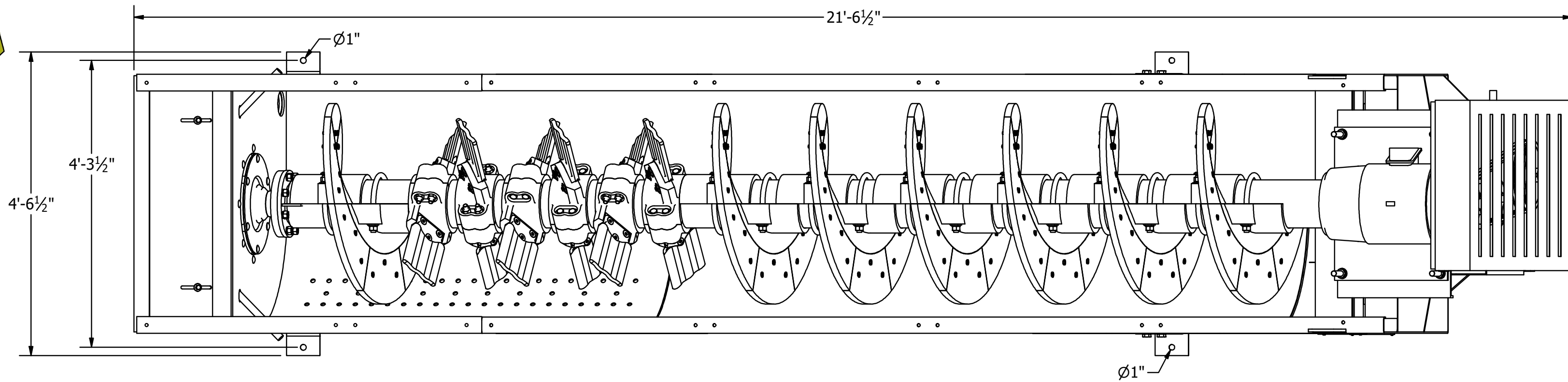
CERTIFICATION		
Aggregate Machinery Specialist		
CUSTOMER ORDER NUMBER: 16673		
MCLANAHAN SERIAL NUMBER: 20219056		
PRELIMINARY PRINT SENT	DATE	BY
APPROVAL DRAWING SENT	9/1/21	DLE
CERTIFIED DIMENSIONAL ACCURACY		
FINAL CERTIFIED DRAWING		



VIEW A-A  
DISCHARGE OPENING AND  
CHUTE MOUNTING DIMENSIONS

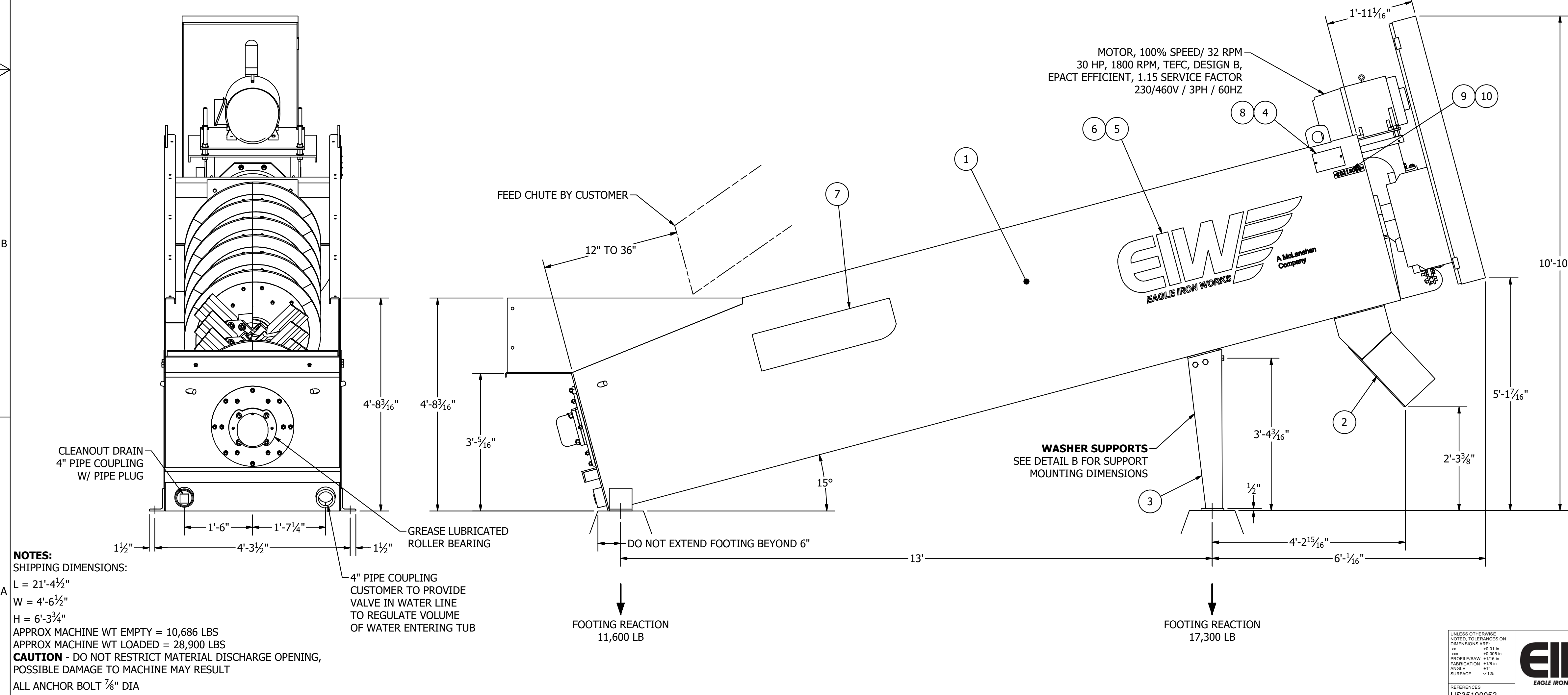


DETAIL B  
SUPPORT MOUNTING BRACKET

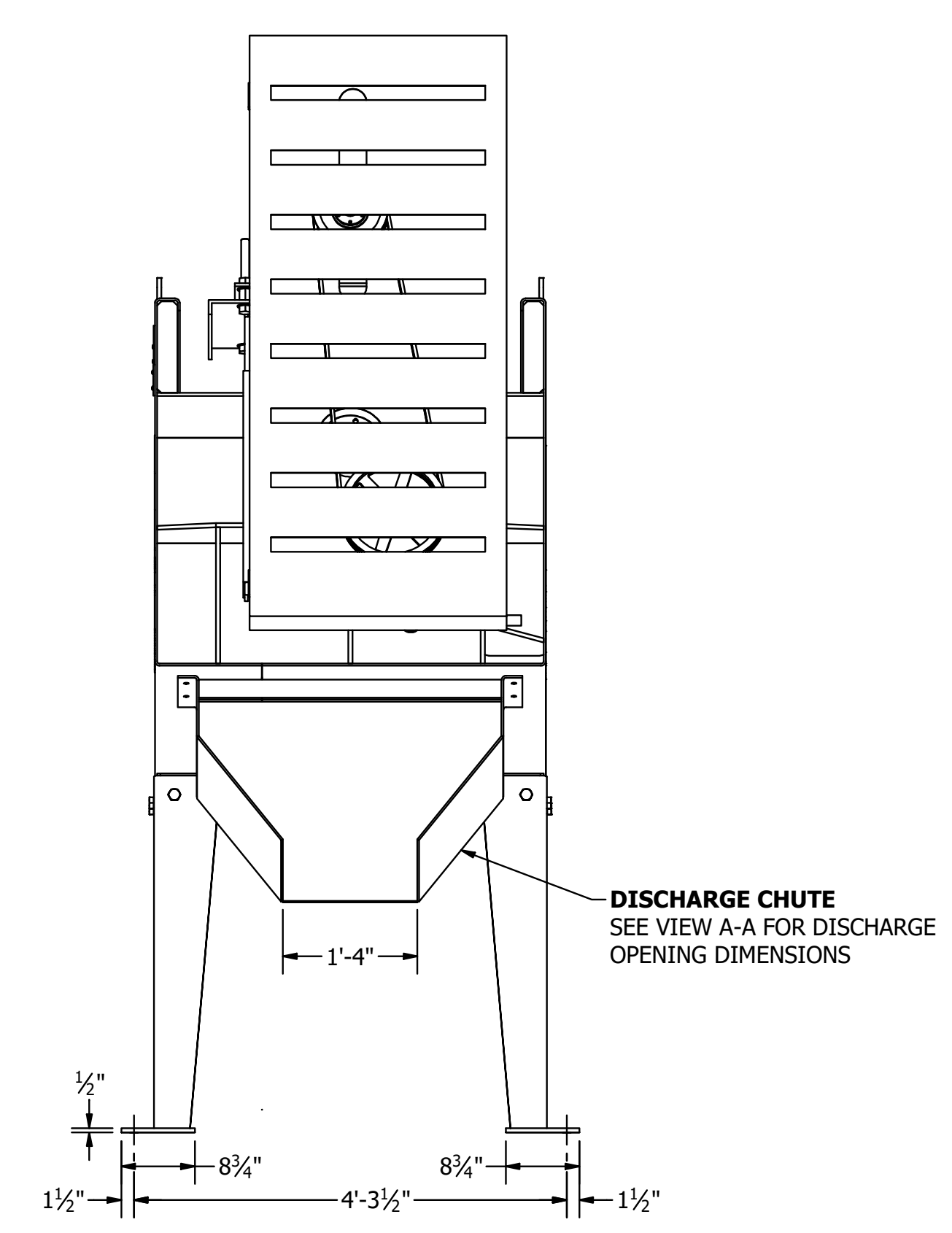


Bill Of Materials					
Ship Loose	Item	Qty.	Part Number	Description	Fin Wt
	1	1	US35100053	TUB ASSEMBLY, CONDOR 36 in DIA X 18' SSCM WASHER, 6 SETS OF PADDLES, 30HP MOTOR	10428 lbmass
*	2	1	A18610	CHUTE, DISCHARGE, 36 CMSSW	121 lbmass
	1			A18610 CONTAINS:	
*	4	294740820	CAPSCREW, HEX HEAD, 0.5X1.25 IN, NC, GRADE 5, ZINC PLATED		
*	4	296507080	NUT, HEX, 0.5 IN, NC, GRADE 5, ZINC PLATED		
*	4	296700800	WASHER, LOCK, 0.5 IN, ZINC PLATED		
*	3	1	B10307	SUPPORT SET, 36 CMSSW	128 lbmass
	1			B10307 CONTAINS:	
*	8	294741432	CAPSCREW, HEX HEAD, 0.875X2 IN, NC, GRADE 5, ZINC PLATED		
*	8	296507140	WASHER, LOCK, 0.875 IN, ZINC PLATED		
*	8	296701400	NUT, HEX, 0.875 IN, NC, GRADE 5, ZINC PLATED		
	4	1	D03180	NAME PLATE	1 lbmass
	5	2	D16639	DECAL, 17.625" X 52.00" EIW LOGO	1 lbmass
	6	1	D38050	DECAL, KIT, EIW WASHERS	0 lbmass
	7	2	D43757	DECAL, CONDOR LOGO, MEDIUM	7 lbmass
	8	2	297212003	SCREW, DRIVE, TYPE U, #12 X 1/2 IN ROUND HEAD DRIVE SCREW, ZINC	0 lbmass
	9	1	PIDP20219056	IDENTIFICATION PLATE, PROJECT ID, 20219056	1 lbmass
	10	2	US50800152	DRIVE SCREW, #14-9 X 0.75 IN, TYPE U, ROUND HEAD, 18-8 SST	0 lbmass
	11	7	US51800054	PRIMER, MIXED/SPRAYABLE, GREY, DURASPAR PRIME HIGH SPEED	0 lbmass
	12	4	US51800008	PAINT, MIXED/SPRAYABLE, EIW GRAY, RAL 7005	0 lbmass
	13	3	US51800003	PAINT, MIXED/SPRAYABLE, SAFETY YELLOW, RAL 1023	0 lbmass

\* SHIPS LOOSE



**NOTES:**  
SHIPPING DIMENSIONS:  
L = 21'-4 1/2"  
W = 4'-6 1/2"  
H = 6'-3 3/4"  
APPROX MACHINE WT EMPTY = 10,686 LBS  
APPROX MACHINE WT LOADED = 28,900 LBS  
**CAUTION** - DO NOT RESTRICT MATERIAL DISCHARGE OPENING, POSSIBLE DAMAGE TO MACHINE MAY RESULT  
ALL ANCHOR BOLT 7/8" DIA



**DISCHARGE CHUTE**  
SEE VIEW A-A FOR DISCHARGE  
OPENING DIMENSIONS

UNLESS OTHERWISE NOTED, TOLERANCES ON DIMENSIONS ARE:  
 0.001 IN. ± 0.001 IN.  
 0.01 IN. ± 0.01 IN.  
 0.1 IN. ± 0.1 IN.  
 1 IN. ± 0.1 IN.  
 1.25 SURFACE ± 0.005

WEIGHT: 10,686 LBS  
SCALE: VARIES  
SHEET NUMBER: 1 OF 1  
DESCRIPTION: INSTALLATION, 36" X 18' SSCM CONDOR WASHER, 6 SETS OF PADDLES, 30 HP MOTOR, 100% DRIVE, DISCHARGE CHUTE, & SUPPORTS FOR 20219056

APPROVED BY: [Signature]  
 CHECKED BY: [Signature]  
 DRAWN BY: [Signature]  
 DLE  
 IS

DATE: 8/30/2021  
 SHEET: D  
 DRAWING NUMBER: US35100056  
 REVISION:

