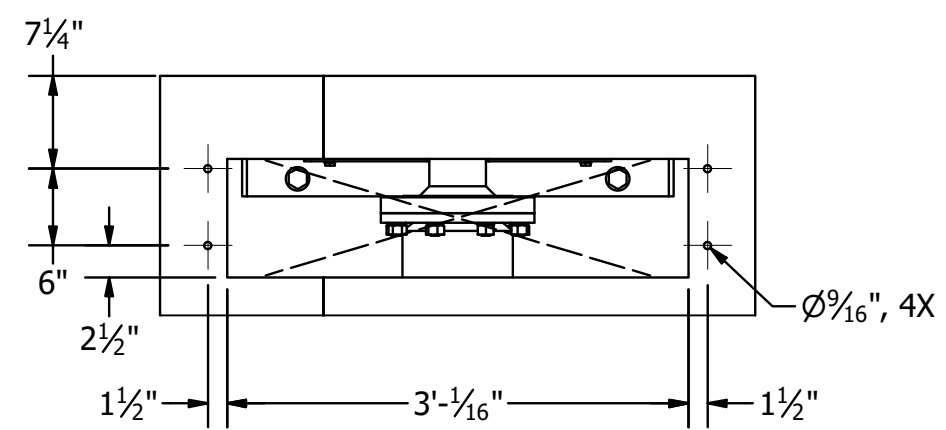
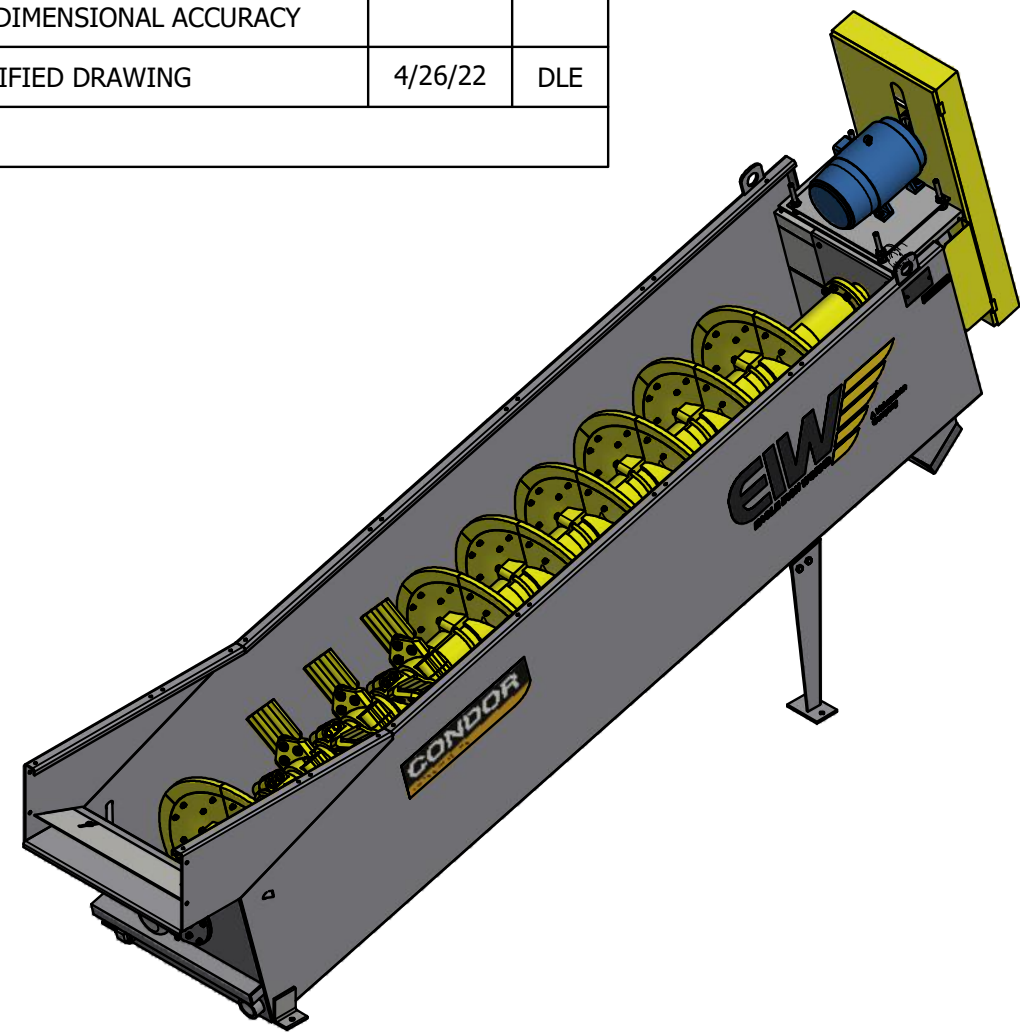
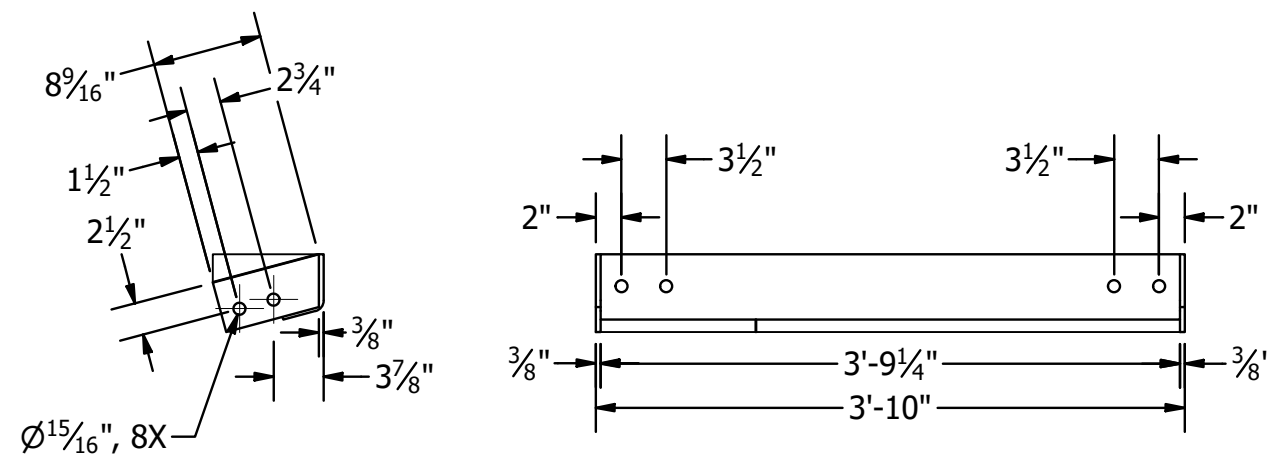


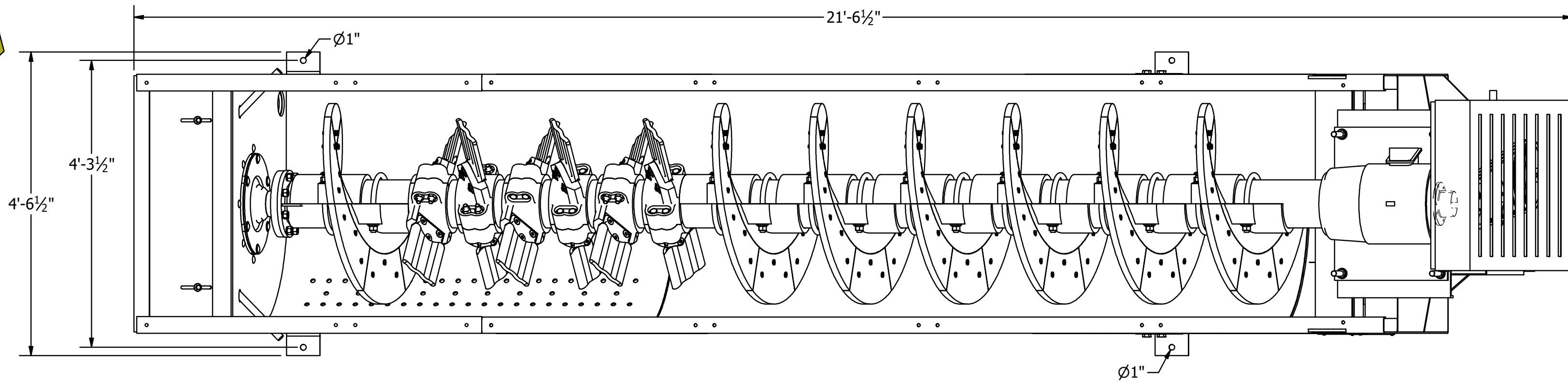
CERTIFICATION		
Aggregate Machinery Specialist Aggregate Machinery Inc.		
CUSTOMER ORDER NUMBER: 16703 REV 1		
MCLANAHAN SERIAL NUMBER: 20229015		
	DATE	BY
PRELIMINARY PRINT SENT		
APPROVAL DRAWING SENT	4/26/22	DLE
CERTIFIED DIMENSIONAL ACCURACY		
FINAL CERTIFIED DRAWING	4/26/22	DLE



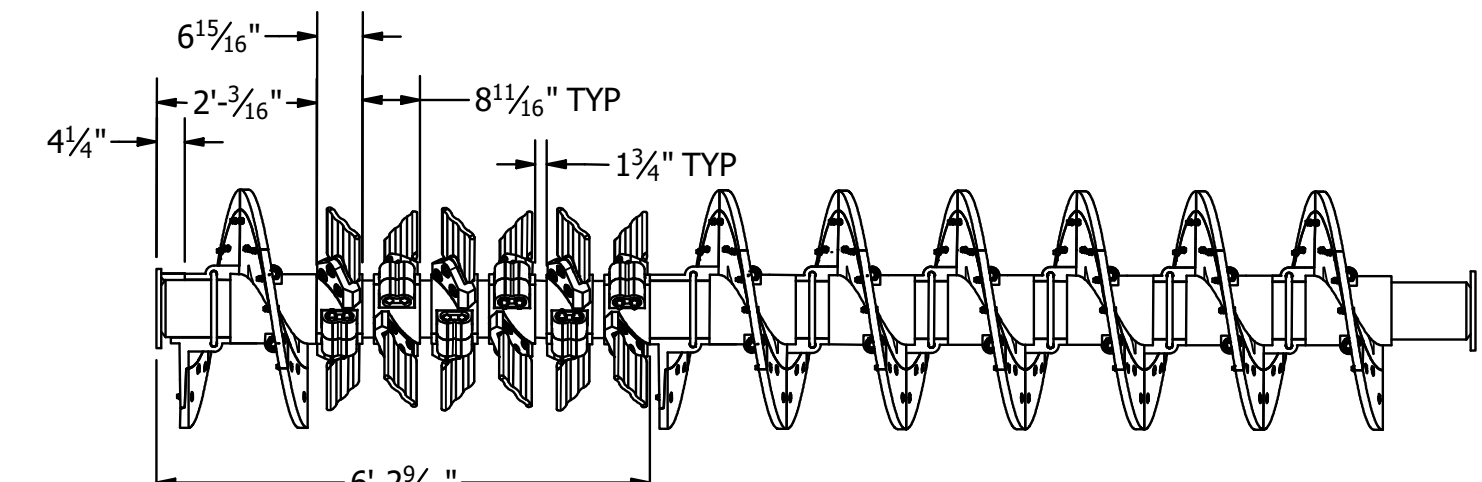
VIEW A-A
DISCHARGE OPENING AND
CHUTE MOUNTING DIMENSIONS



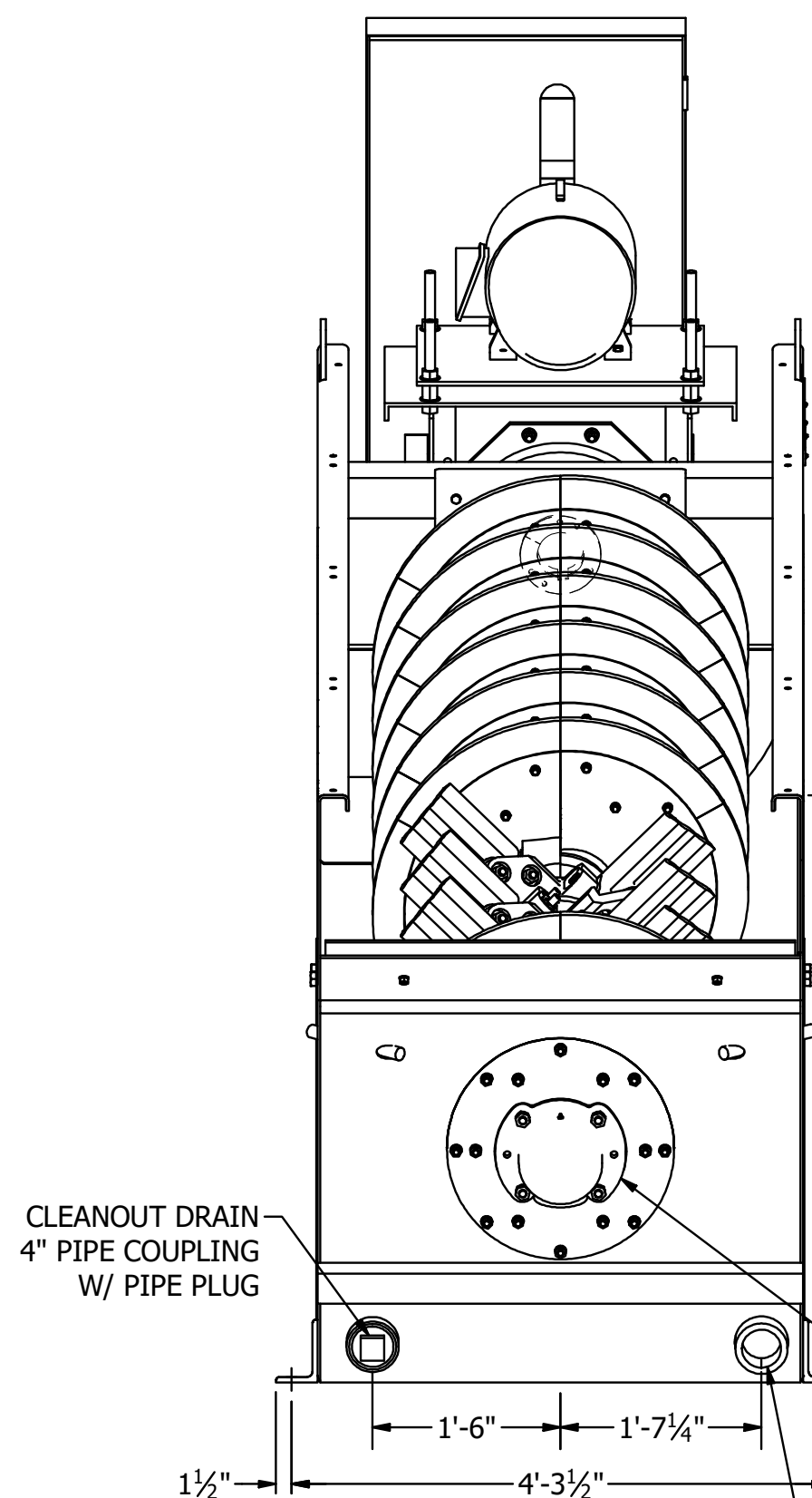
DETAIL B
SUPPORT MOUNTING BRACKET



Bill Of Materials					
Ship Loose	Item	Qty.	Part Number	Description	Fin Wt
	1	1	US35100053	TUB ASSEMBLY, CONDOR 36 in DIA X 18' SSCM WASHER, 6 SETS OF PADDLES, 30HP MOTOR	10422 lbmass
*	2	1	A18610	CHUTE, DISCHARGE, 36 CMSSW	121 lbmass
	1			A18610 CONTAINS:	
*	4		294740820	CAPSCREW, HEX HEAD, 0.5X1.25 IN, NC, GRADE 5, ZINC PLATED	
*	4		296507080	NUT, HEX, 0.5 IN, NC, GRADE 5, ZINC PLATED	
*	4		296700800	WASHER, LOCK, 0.5 IN, ZINC PLATED	
*	3	1	B10307	SUPPORT SET, 36 CMSSW	128 lbmass
	1			B10307 CONTAINS:	
*	8		294741432	CAPSCREW, HEX HEAD, 0.875X2 IN, NC, GRADE 5, ZINC PLATED	
*	8		296507140	WASHER, LOCK, 0.875 IN, ZINC PLATED	
*	8		296701400	NUT, HEX, 0.875 IN, NC, GRADE 5, ZINC PLATED	
	4	1	D03180	NAME PLATE	1 lbmass
	5	2	D16639	DECAL, 17.625" X 52.00" EIW LOGO	1 lbmass
	6	1	D38050	DECAL, KIT, EIW WASHERS	0 lbmass
	7	2	D43757	DECAL, CONDOR LOGO, MEDIUM	7 lbmass
	8	2	297212003	SCREW, DRIVE, TYPE U, #12 X 1/2 IN ROUND HEAD DRIVE SCREW, ZINC	0 lbmass
	9	1	PIDP20229015	IDENTIFICATION PLATE, PROJECT ID 20229015	1 lbmass
	10	2	US50800152	DRIVE SCREW, #14-9 X 0.75 IN, TYPE U, ROUND HEAD, 18-8 SST	0 lbmass



SHAFT ASSEMBLY
SCALE 1 / 29



NOTES:
SHIPPING DIMENSIONS:
L = 21'-4 1/2"
W = 4'-6 1/2"
H = 6'-3 3/4"
APPROX MACHINE WT EMPTY = 10,686 LBS
APPROX MACHINE WT LOADED = 28,900 LBS
CAUTION - DO NOT RESTRICT MATERIAL DISCHARGE OPENING,
POSSIBLE DAMAGE TO MACHINE MAY RESULT
ALL ANCHOR BOLT 7/8" DIA

FEED CHUTE BY CUSTOMER

12" TO 36"

7

1

6

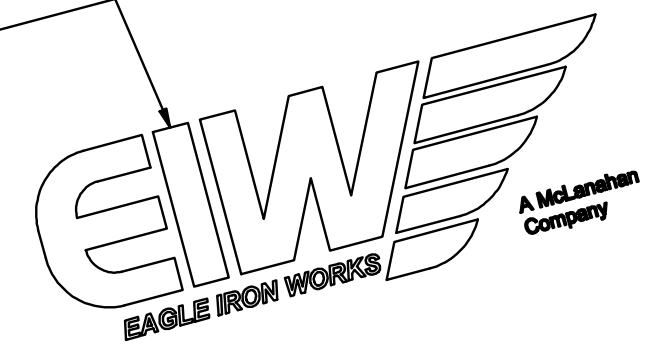
5

8

4

9

10



MOTOR, 100% SPEED/ 32 RPM
30 HP, 1800 RPM, TEFC, DESIGN B,
EPACT EFFICIENT, 1.15 SERVICE FACTOR
230/460V / 3PH / 60HZ

WASHER SUPPORTS
SEE DETAIL B FOR SUPPORT
MOUNTING DIMENSIONS

3

FOOTING REACTION
17,300 LB

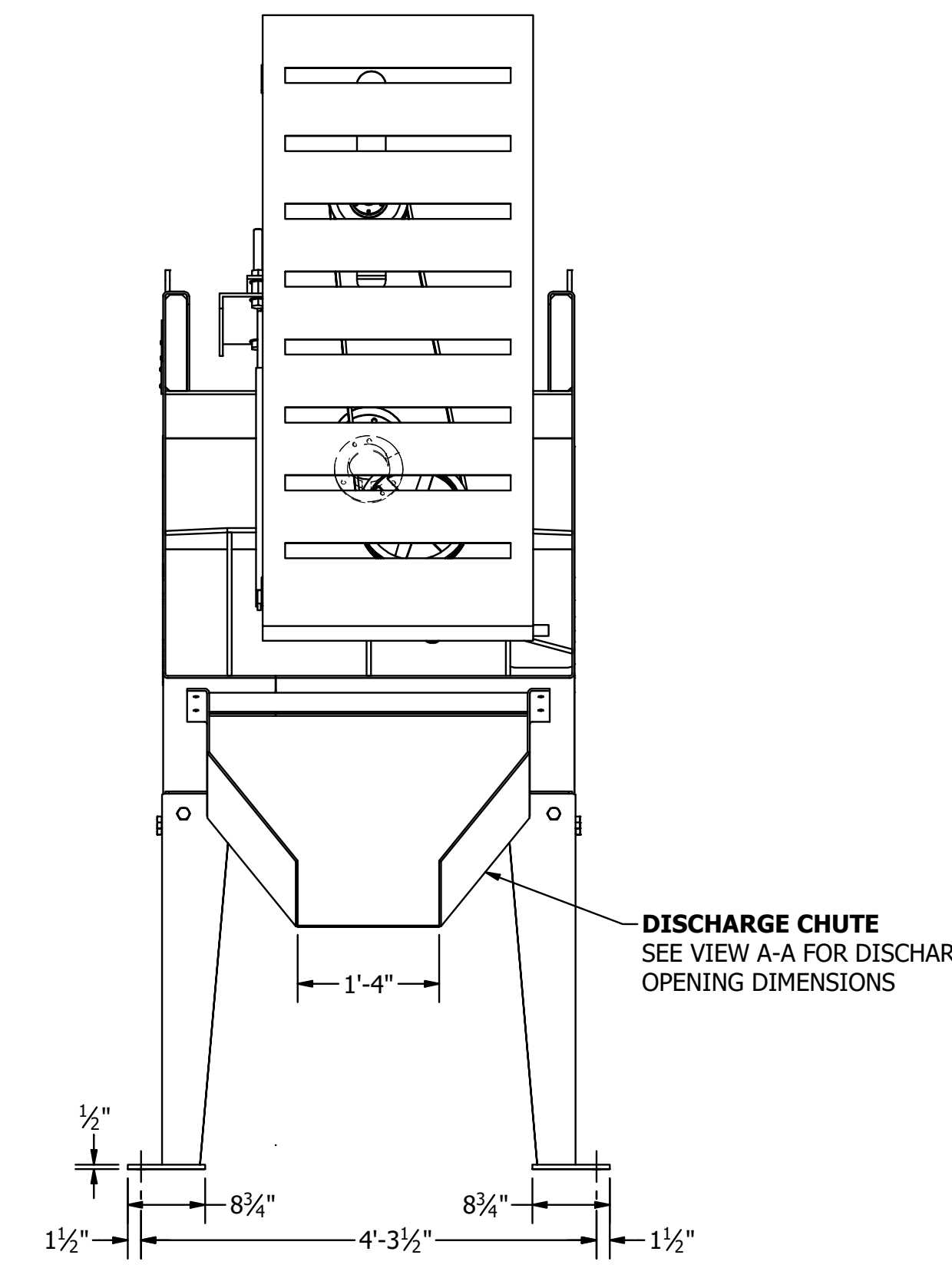
FOOTING REACTION
11,600 LB

DO NOT EXTEND FOOTING BEYOND 6"

GREASE LUBRICATED
ROLLER BEARING

4" PIPE COUPLING
CUSTOMER TO PROVIDE
VALVE IN WATER LINE
TO REGULATE VOLUME
OF WATER ENTERING TUB

CLEANOUT DRAIN
4" PIPE COUPLING
W/ PIPE PLUG



DISCHARGE CHUTE
SEE VIEW A-A FOR DISCHARGE
OPENING DIMENSIONS

UNLESS OTHERWISE
NOTED, TOLERANCES ON
DIMENSIONS ARE:
Ø .001 IN
Ø .002 IN
Ø .003 IN
Ø .004 IN
Ø .005 IN
Ø .006 IN
Ø .007 IN
Ø .008 IN
Ø .009 IN
Ø .010 IN



WEIGHT:
10,686 LBS
SCALE:
VARIES
1 OF 1

SHEET NUMBER:
1 OF 1
DRAWN BY:
DLE
CHECKED BY:
IS

PART NUMBER: SSCM36X1820229015
DESCRIPTION:
INSTALLATION, 36" X 18' SSCM CONDOR WASHER, 6
SETS OF PADDLES, 30 HP MOTOR, 100% DRIVE,
DISCHARGE CHUTE, & SUPPORTS FOR 20229015

1ST ISSUE DATE:
4/26/2022
SHEET SIZE:
D
DRAWING NUMBER:
US35100068

APPROVED BY:
THIRD ANGLE
PROJECTION
ASSEMBLY DRAWING

REVISION