

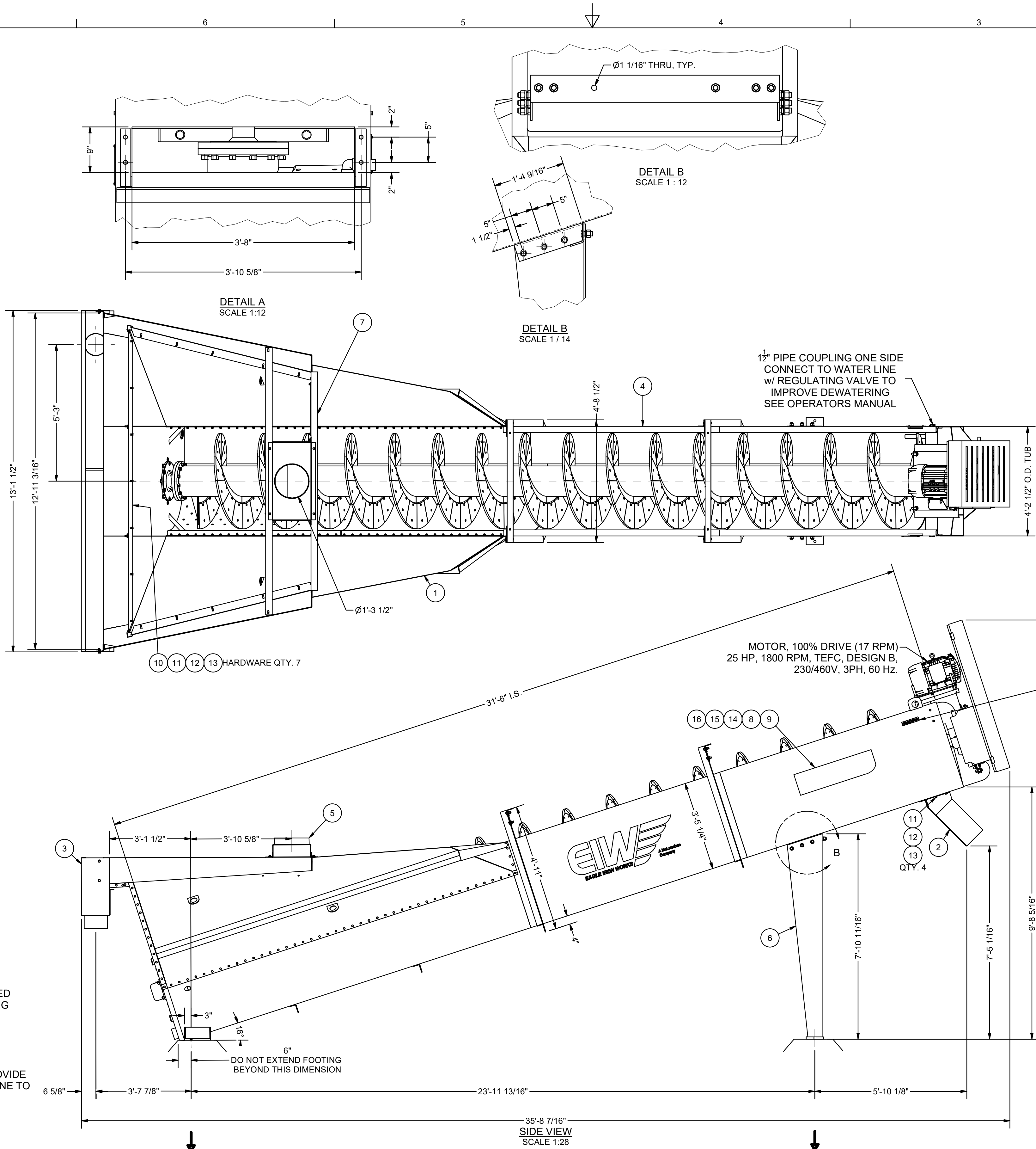
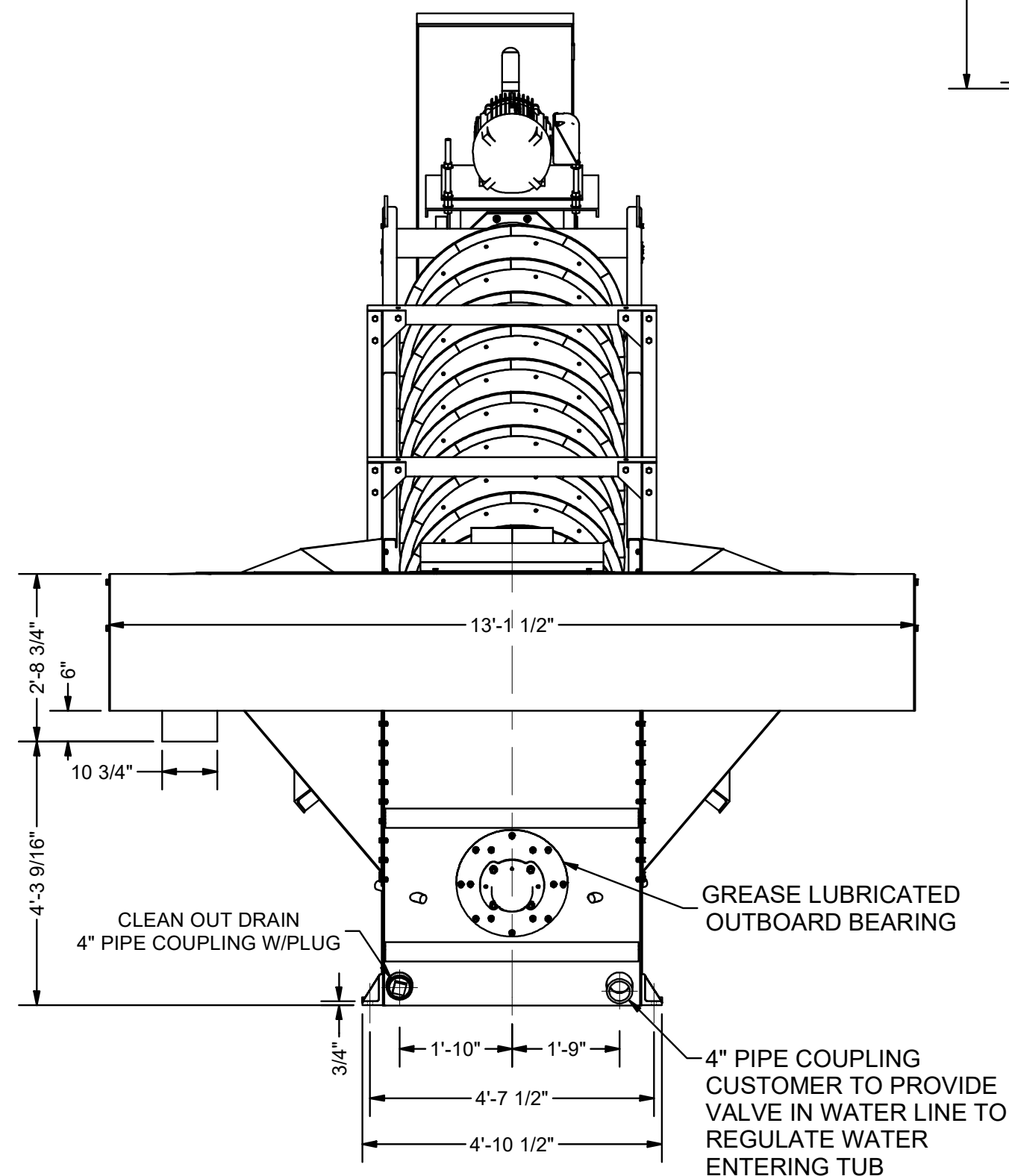
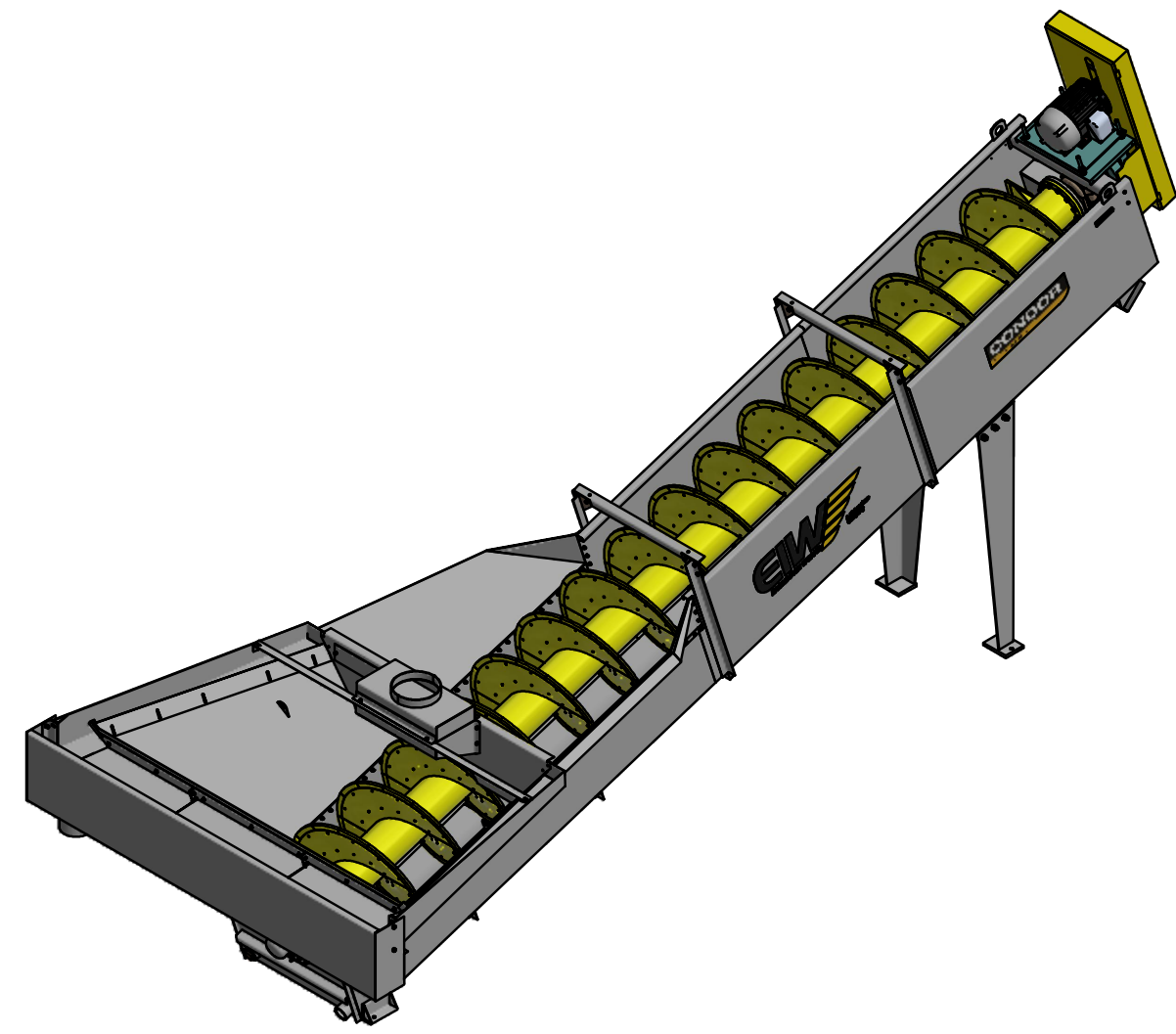
CERTIFICATION

Aggregate Machinery Specialist
Aggregate Machinery Specialist

CUSTOMER ORDER NUMBER: 16719

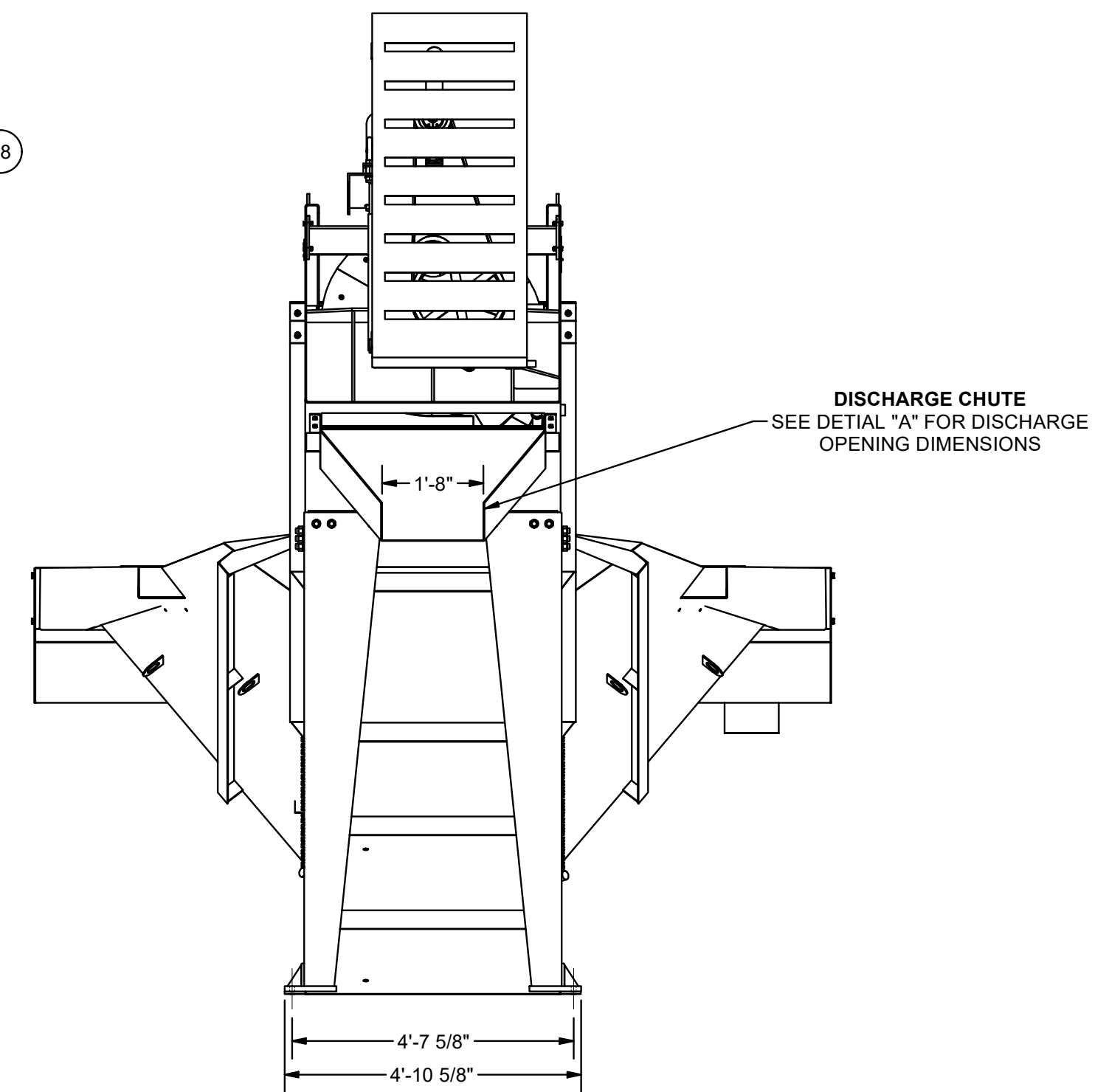
MCLANAHAN SERIAL NUMBER: 20229063

	DATE	BY
PRELIMINARY PRINT SENT		
APPROVAL DRAWING SENT	11/29/22	DLE
CERTIFIED DIMENSIONAL ACCURACY		
FINAL CERTIFIED DRAWING		



Bill of Materials					
SHIP LOOSE	Item	Qty.	Part Number	Description	Fin Wt
*	1	1	A03303	SIDE FLARE ASSEMBLY, 44 & 54 FM WASHER (INCLUDES HARDWARE)	1500 lbmass
*	*	128	296700800	WASHER, LOCK, 0.5 IN, ZINC PLATED	2 lbmass
*	*	128	294740820	HEX BOLT, 1/2-13NC x 1.25" LG	15 lbmass
*	*	128	296507080	HEX NUT, 1/2-13NC, GRADE 5, ZINC PLATED	5 lbmass
*	2	1	A18441	DISCHARGE CHUTE (INCLUDES HARDWARE)	127 lbmass
*	3	1	A22987	WATER OVERFLOW FLUME (INCLUDES HARDWARE)	379 lbmass
*	*	4	294741028	CAPSCREW, HEX HEAD, 5/8" X 1 3/4", NC, GRADE 5, ZINC PLATED	
*	*	4	296701000	WASHER, LOCK, 5/8", ZINC PLATED	
*	*	4	296507100	NUT, HEX, 5/8", NC, GRADE 5, ZINC PLATED	
	4	1	US35000366	ASSEMBLY, 44 IN X 32 FT SSFM CONDOR, 100% DRIVE 25 HP MOTOR, CONVEYOR SHAFTS W/ WHITE IRON WEAR SHOES	13523 lbmass
	5	1	B02865	INLET COVER, 44, 48, & 54 IN SF WASHER	132 lbmass
*	6	1	B10305	WASHER SUPPORTS (INCLUDES HARDWARE)	489 lbmass
*	*	12	294741632	CAPSCREW, HEX HEAD, 1" X 2", NC, GRADE 5, ZINC PLATED	9 lbmass
*	*	12	296701600	WASHER, LOCK, 1", ZINC PLATED	1 lbmass
*	*	12	296507160	NUT, HEX, 1", NC, GRADE 5, ZINC PLATED	4 lbmass
*	7	1	B10433	FEED BOX ASSEMBLY (INCLUDES HARDWARE)	250 lbmass
*	*	6	294740820	HEX BOLT, 1/2-13NC x 1.25" LG	
*	*	6	296700800	LOCK WASHER, 1/2", ZINC PLATED	
*	*	6	296507080	HEX NUT, 1/2-13NC, GRADE 5, ZINC PLATED	
	8	2	D16639	DECAL, 17.625" X 52.00" EIW LOGO	1 lbmass
	9	2	D43757	DECAL, CONDOR LOGO, MEDIUM	7 lbmass
*	10	1	D05928	WEIR, END, 44, SSFM WASHER (INCLUDES HARDWARE)	42 lbmass
*	11	11	294740820	HEX BOLT, 1/2-13NC x 1.25" LG	1 lbmass
*	12	11	296507080	NUT, HEX, 1/2", NC, GRADE 5, ZINC PLATED	0 lbmass
*	13	11	296700800	WASHER, LOCK, 0.5 IN, ZINC PLATED	0 lbmass
	14	1	D03180	NAME PLATE	1 lbmass
	15	2	297212003	SCREW, DRIVE, TYPE U, #12 X 1/2 IN ROUND HEAD DRIVE SCREW, ZINC	0 lbmass
	16	1	D38050	DECAL, KIT, EIW WASHERS	0 lbmass
	17	1	PIDP20229063	IDENTIFICATION PLATE, PROJECT ID 20229063	1 lbmass
	18	2	US50800152	DRIVE SCREW, #14-9 X 0.75 IN, TYPE U, ROUND HEAD, 18-8 SST	0 lbmass

*= SHIPPED LOOSE



- NOTES:**
- CAUTION: DO NOT RESTRICT MATERIAL DISCHARGE OPENING, POSSIBLE DAMAGE TO MACHINE MAY RESULT
 - PERSONNEL SAFETY COVERS AVAILABLE ON SPECIAL ORDER
 - ALL ANCHOR BOLTS 7/8" DIA
 - MACHINE WT EMPTY = 16,460 LB
 - MACHINE WT LOADED = 69,500 LB

UNLESS OTHERWISE NOTED, TOLERANCES ON DIMENSIONS ARE:
 0.01 IN ±
 0.005 IN ±
 0.015 IN ±
 0.005 IN ±
 0.015 IN ±
 0.005 IN ±
 0.015 IN ±
 0.005 IN ±

WEIGHT: 16,460 LB
SCALE: 1 OF 1
SHEET NUMBER: 1 OF 1
DRAWN BY: DLE
CHECKED BY: IRS
PART NUMBER: SSFMC44X3220229063
DESCRIPTION: INSTALL, 44 IN X 32 FT SSFM CONDOR WASHER, OVERFLOW FLUME, DISCHARGE CHUTE, 100% 25 HP DRIVE, CONVEYORS W/ WHITE IRON SHOES
1ST ISSUE DATE: 11/29/2022
SHEET SIZE: D
DRAWING NUMBER: US35000447
REVISION:

APPROVED BY: CUSTOMER DRAWING

EIW EAGLE IRON WORKS