

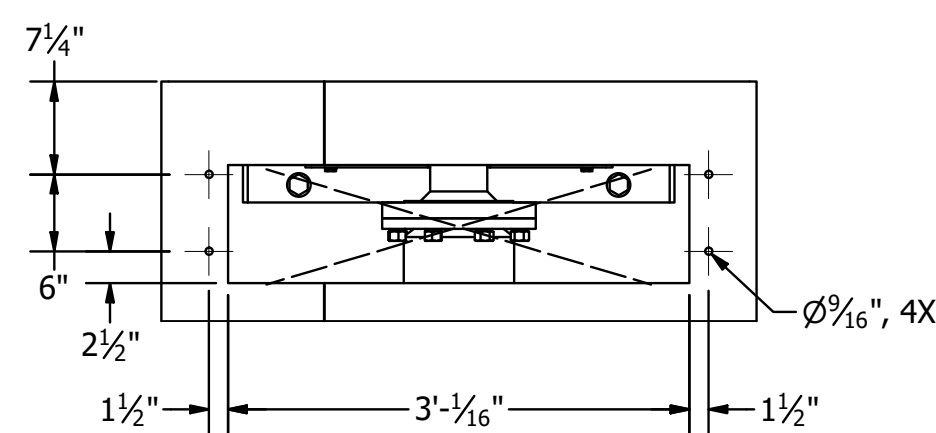
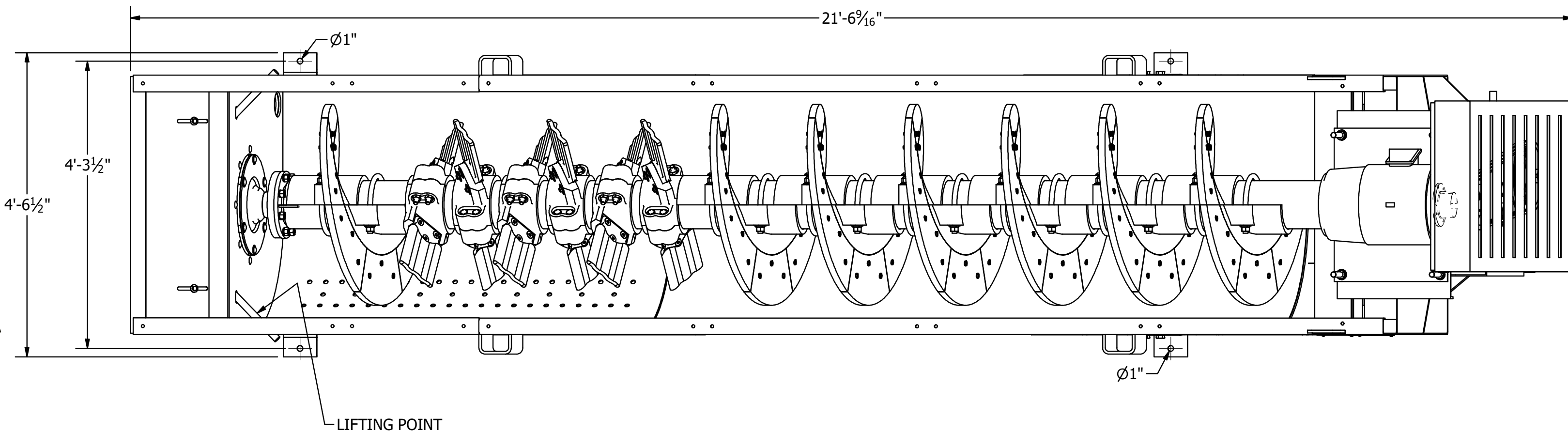
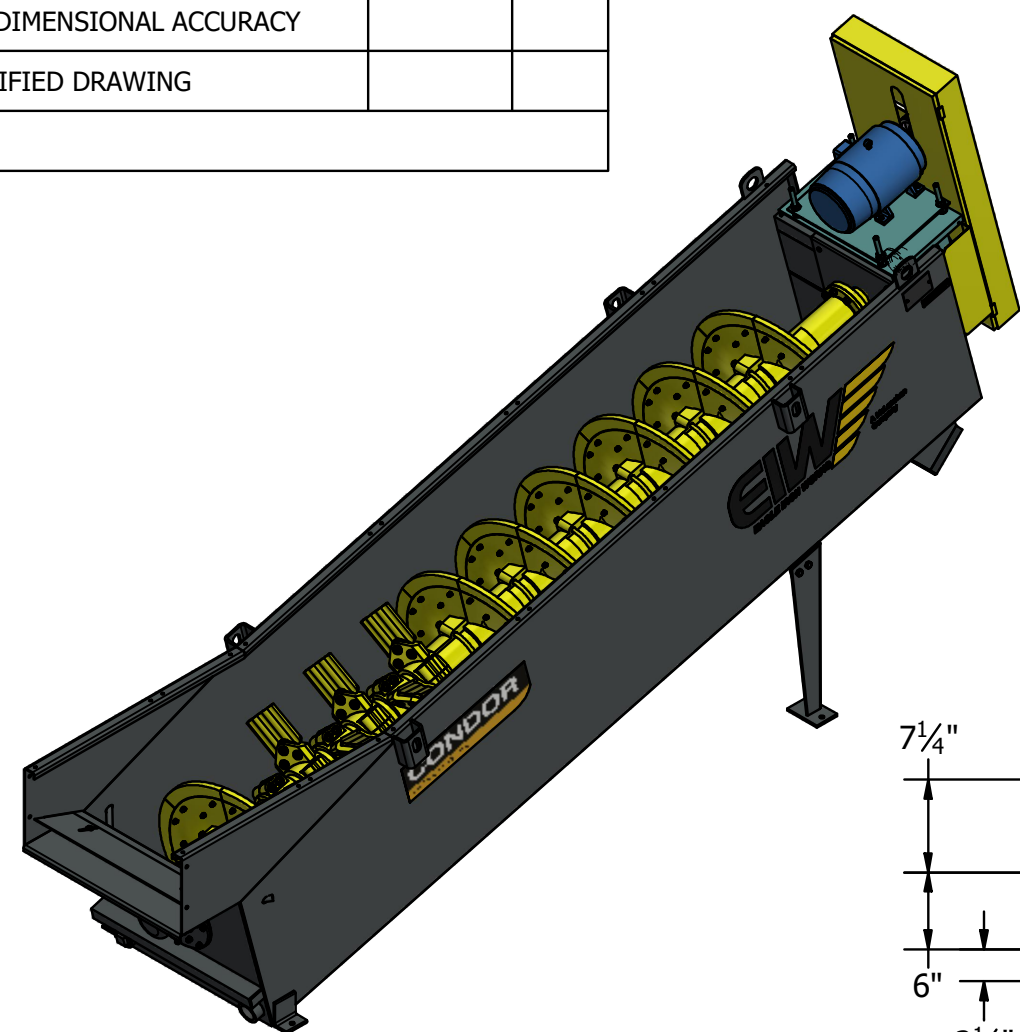
CERTIFICATION

Aggregate Machinery Specialist
Aggregate Machinery Inc.

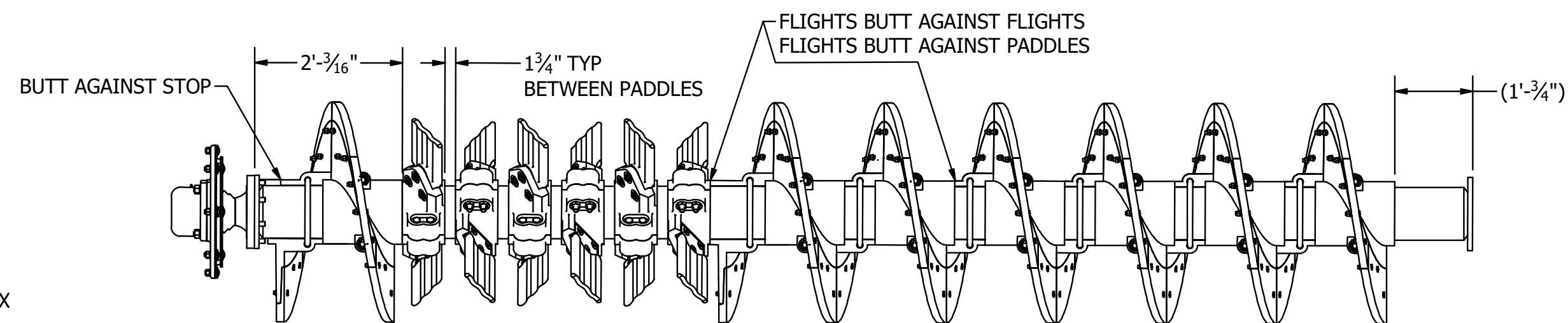
CUSTOMER ORDER NUMBER: 16727 REV 1

MCLANAHAN SERIAL NUMBER: 20239047

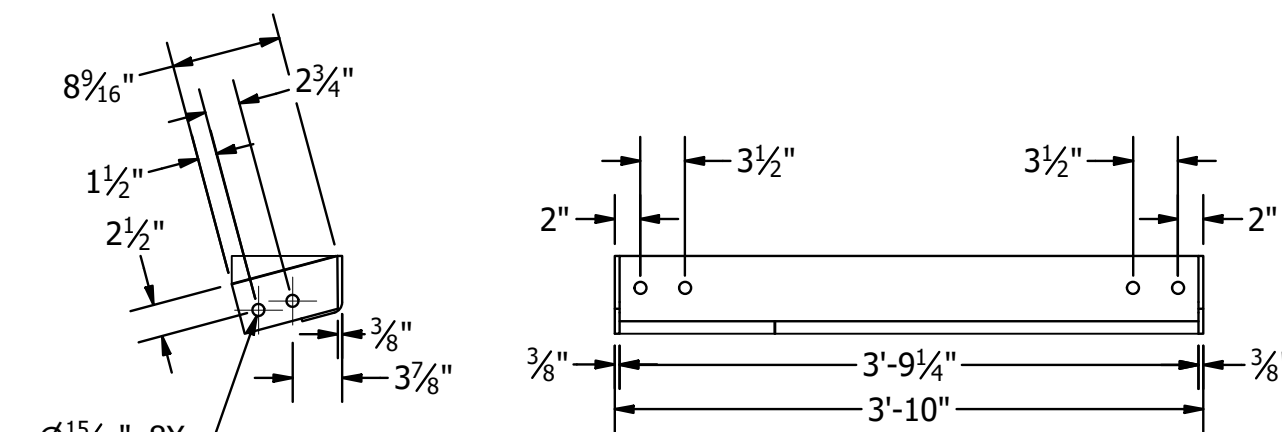
	DATE	BY
PRELIMINARY PRINT SENT		
APPROVAL DRAWING SENT	8/15/23	DLE
CERTIFIED DIMENSIONAL ACCURACY		
FINAL CERTIFIED DRAWING		



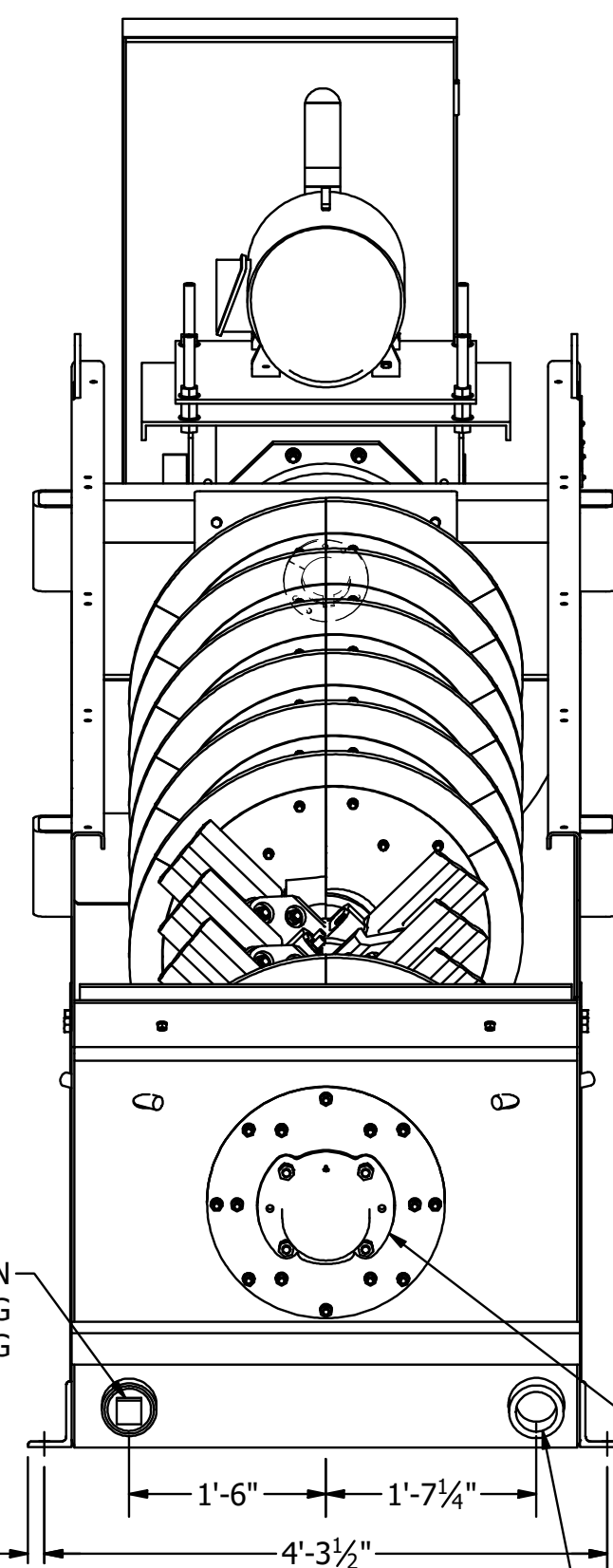
VIEW A-A
DISCHARGE OPENING AND
CHUTE MOUNTING DIMENSIONS



SHAFT LAYOUT
SCALE 1:20



DETAIL B
SUPPORT MOUNTING BRACKET



NOTES:
SHIPPING DIMENSIONS:
L = 21'-4 1/2"
W = 4'-6 1/2"
H = 6'-3 3/4"
APPROX MACHINE WT EMPTY = 10,730 LB
APPROX MACHINE WT LOADED = 28,900 LB
CAUTION - DO NOT RESTRICT MATERIAL DISCHARGE OPENING,
POSSIBLE DAMAGE TO MACHINE MAY RESULT
ALL ANCHOR BOLT 7/8" DIA

FEED CHUTE BY CUSTOMER

12" TO 36"

LIFTING POINT

DO NOT EXTEND FOOTING BEYOND 6"

FOOTING REACTION
11,600 LB

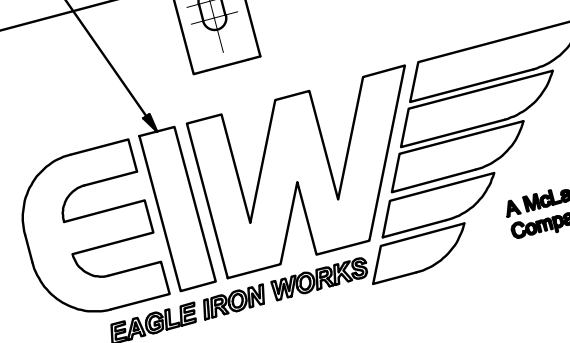
WASHER SUPPORTS
SEE DETAIL B FOR SUPPORT
MOUNTING DIMENSIONS

FOOTING REACTION
17,300 LB

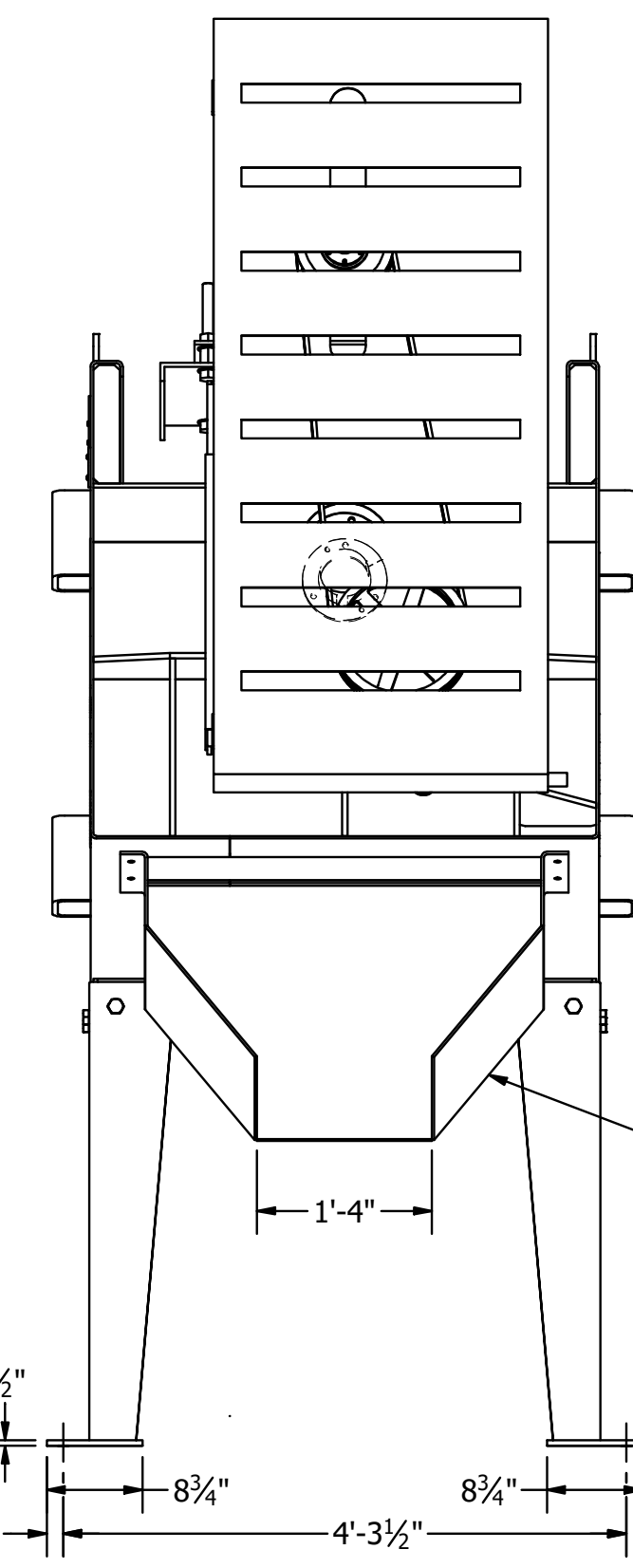
MOTOR, 100% SPEED/ 32 RPM
30 HP, 1800 RPM, TEFC, DESIGN B,
EPACT EFFICIENT, 1.15 SERVICE FACTOR
230/460V / 3PH / 60HZ

LIFTING POINT

LIFTING POINT



NOTE:
USING STOCK JOB #071617



DISCHARGE CHUTE
SEE VIEW A-A FOR DISCHARGE
OPENING DIMENSIONS

* SHIPS LOOSE

Bill Of Materials					
Ship Loose	Item	Qty.	Part Number	Description	Fin Wt
	1	1	US35100053	TUB ASSEMBLY, CONDOR 36 IN DIA X 18' SSCM WASHER, 6 SETS OF PADDLES, 30HP MOTOR	10472 lbmass
*	2	1	A18610	CHUTE, DISCHARGE, 36 CMSSW	120 lbmass
	1	1		A18610 CONTAINS:	
*	4	294740820	CAPSCREW, HEX HEAD, 0.5X1.25 IN, NC, GRADE 5, ZINC PLATED		
*	4	296507080	NUT, HEX, 0.5 IN, NC, GRADE 5, ZINC PLATED		
*	4	296700800	WASHER, LOCK, 0.5 IN, ZINC PLATED		
*	3	1	B10307	SUPPORT SET, 36 CMSSW	128 lbmass
	1	1		B10307 CONTAINS:	
*	8	294741432	CAPSCREW, HEX HEAD, 0.875X2 IN, NC, GRADE 5, ZINC PLATED		
*	8	296507140	WASHER, LOCK, 0.875 IN, ZINC PLATED		
*	8	296701400	NUT, HEX, 0.875 IN, NC, GRADE 5, ZINC PLATED		
	4	1	D03180	NAME PLATE	1 lbmass
	5	2	D16639	DECAL, 17.625" X 52.00" EIW LOGO	1 lbmass
	6	1	D38050	DECAL, KIT, EIW WASHERS	0 lbmass
	7	2	D43757	DECAL, CONDOR LOGO, MEDIUM	7 lbmass
	8	2	297212003	SCREW, DRIVE, TYPE U, #12 X 1/2 IN ROUND HEAD DRIVE SCREW, ZINC	0 lbmass
	9	1	PIDP20239047	IDENTIFICATION PLATE, PROJECT ID 20239047	1 lbmass
	10	2	US50800152	DRIVE SCREW, #14-9 X 0.75 IN, TYPE U, ROUND HEAD, 18-8 SST	0 lbmass

UNLESS OTHERWISE NOTED, TOLERANCES ON DIMENSIONS ARE:
Ø 0.01 IN.
Ø 0.01 IN.
PROFILES/SAW 0.116 IN.
FABRICATION 0.015 IN.
ANGLES 0.1°
SURFACE 0.125



WEIGHT: 10,730 LB
SCALE: VARIES
SHEET NUMBER: 1 OF 1
DESCRIPTION: THIS DRAWING IS THE PROPERTY OF MCLANAHAN CORPORATION AND SHALL NOT BE REPRODUCED OR COPIED IN ANY MANNER WITHOUT THE WRITTEN PERMISSION OF MCLANAHAN CORPORATION. ANY USE OF THE INFORMATION CONTAINED HEREIN WITHOUT THE WRITTEN PERMISSION OF MCLANAHAN CORPORATION IS STRICTLY PROHIBITED. THE INFORMATION CONTAINED HEREIN IS FOR YOUR INFORMATION ONLY AND DOES NOT CONSTITUTE AN OFFER OR A CONTRACT. THE INFORMATION CONTAINED HEREIN IS SUBJECT TO CHANGE WITHOUT NOTICE.
THIRD ANGLE PROJECTION
ASSEMBLY DRAWING

PART NUMBER: SSCMC36X1820239047
DRAWN BY: DLE
CHECKED BY: IRS
APPROVED BY:
DATE: 8/15/2023
SHEET SIZE: D
DRAWING NUMBER: US35100114
REVISION: